



Feel Empowered

**Revolutionizing EPC
projects and predictive
maintenance with
Digital Twins**

SAKARI LÄHDETIE – Cadmatic Oy

FIIF Event: Industrial Metaverse (Feb 6, 9-12,
Helsinki and online)

Meyer Turku

Your closest contacts



**Vesa-Matti
Vaara**

Sales Director



**Jim
Nyroos**

Tech Sales Director



A leading CAD and information management software provider to the marine, process and building industries

KEY HIGHLIGHTS



€35m sales with 20% annual growth since 2015



6,000 customers in 60 countries



340 employees



40% of shipyards use Cadmatic software



6x growth of process industry revenue in six years



HQ in **Turku, Finland** and offices in **14** countries



- Ownership:
- ✓ Elomatic
 - ✓ Mandatum
 - ✓ Management and personnel



EPC means Engineering, Procurement and Construction



Engineering

- Design and planning of the project.



Procurement

- Sourcing and purchasing necessary materials and equipment.



Construction

- Execution, installation, and commissioning of the project.

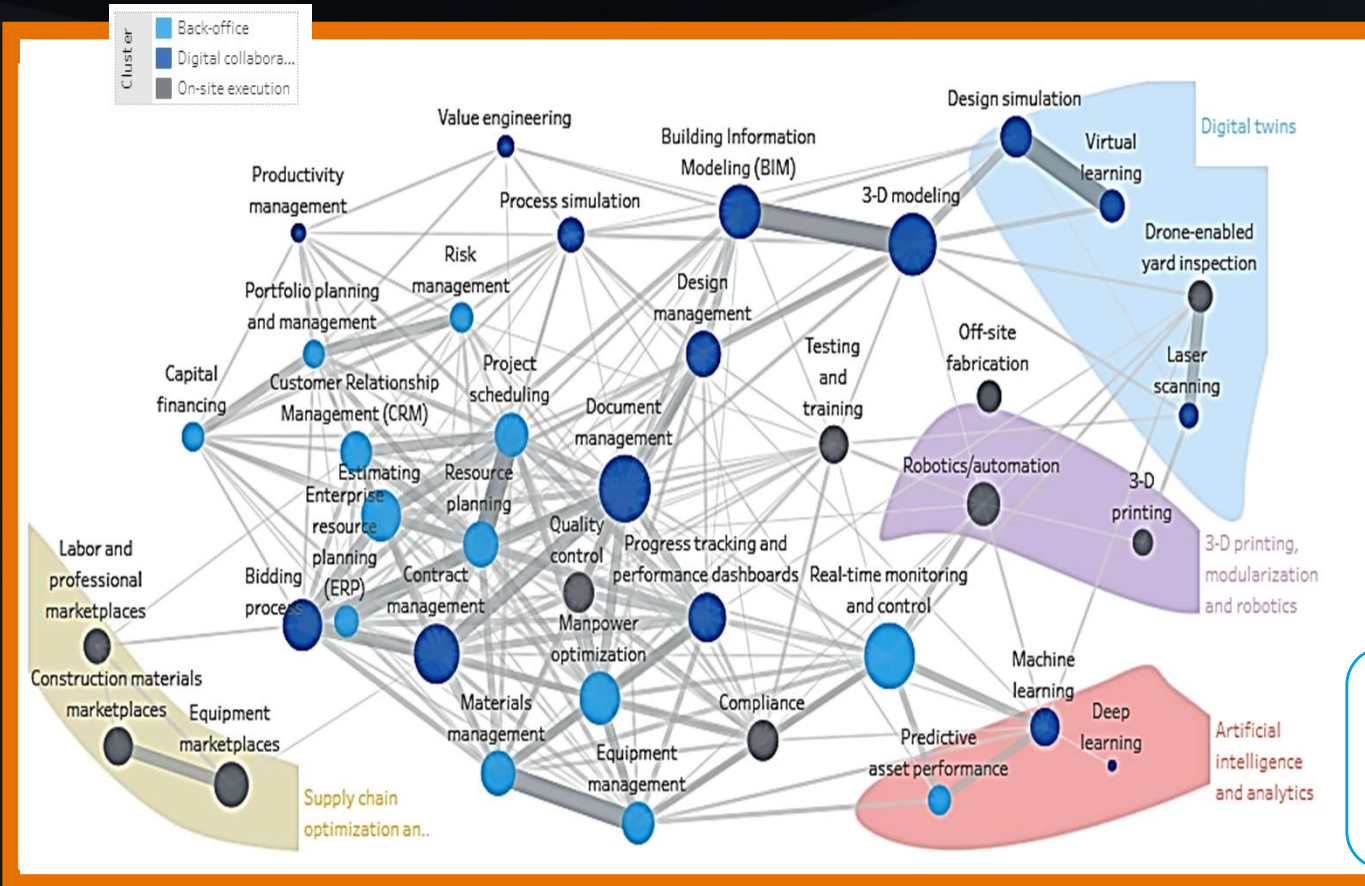
Owner-operators (OOs)

- are companies that **own and operate large industrial asset**

DIGITAL TWINS



Mapping the Complex Technology Landscape



Constellations

- Supply chain optimization and marketplaces
- 3-D printing, modularization and robotics
- Artificial intelligence and analytics
- Digital twins

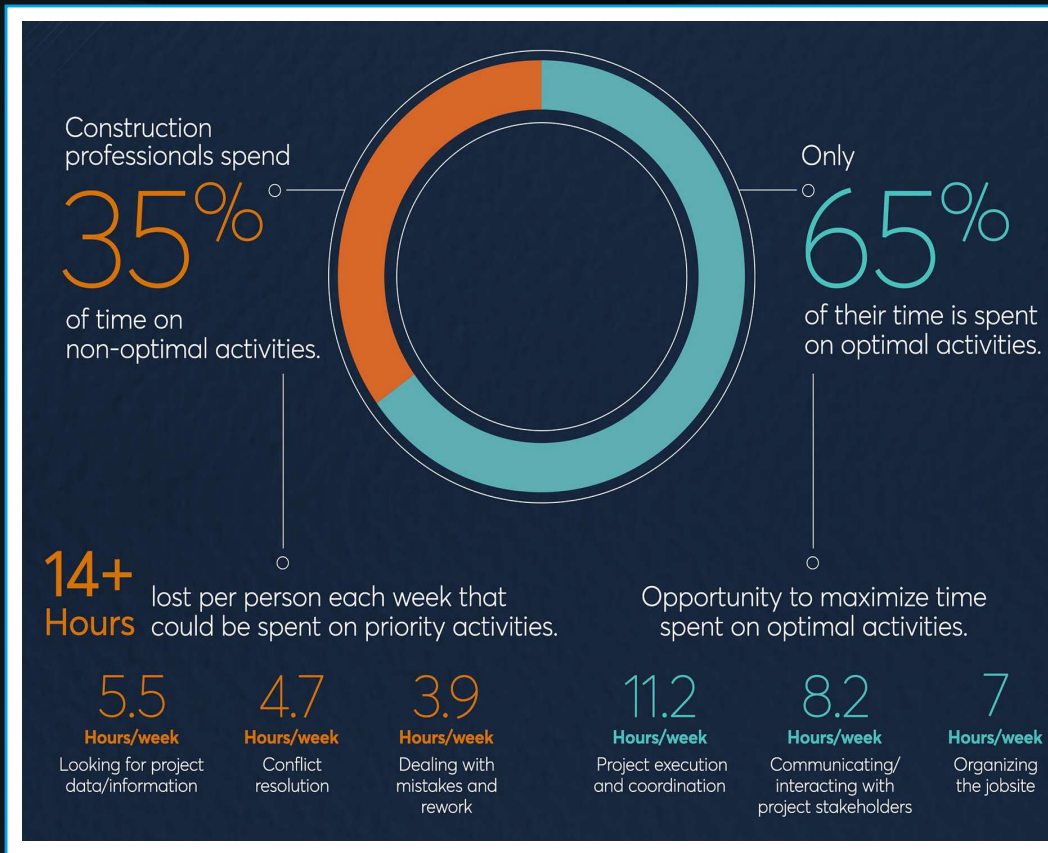
Source(s): Seizing the opportunity in today's construction technology ecosystem; McKinsey

Governance, Risk and Compliance processes need to adapt as organizations continue to drive Digital Transformation to be faster, improve quality and increase productivity

Embrace the data



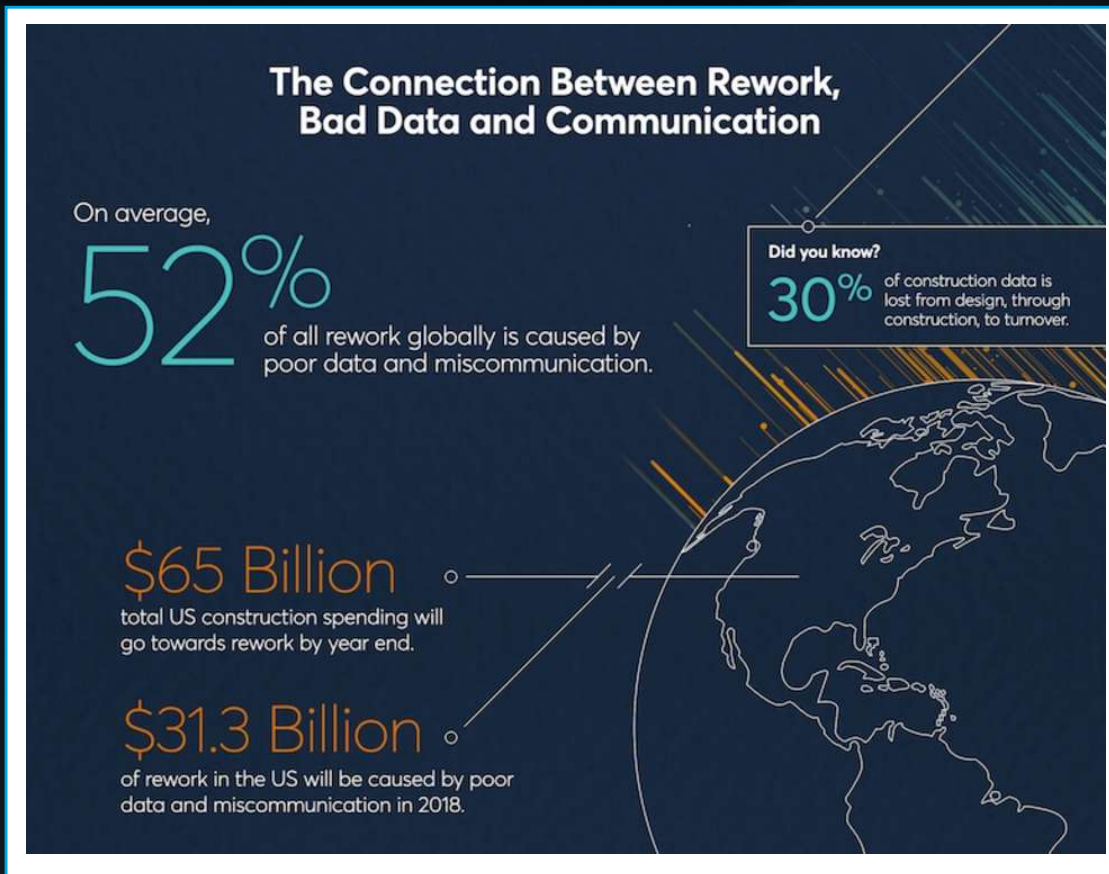
Time flies, but where ...



An Average Breakdown of Time Waste Per Role

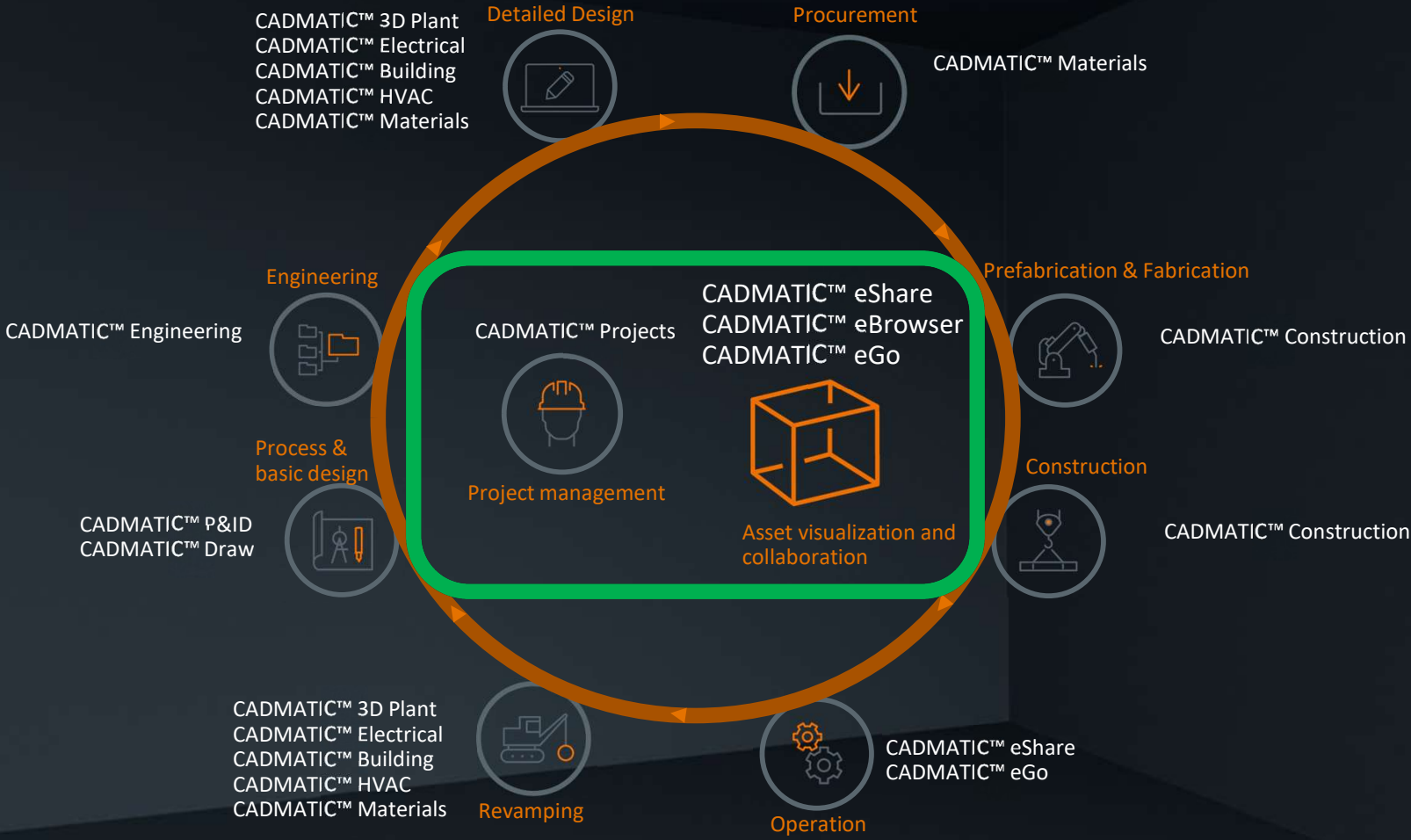
| Role | Total Weekly Hours Wasted | Annual Cost Impact |
|---------------------------|---------------------------|--------------------|
| C-level | 14.05 | \$125,286.10 |
| Directors/Vice Presidents | 13.52 | \$70,260.26 |
| Project Managers | 13.39 | \$49,247.33 |
| Preconstruction Managers | 13.71 | \$49,228.54 |
| Field Supervisors | 15.84 | \$48,835.32 |
| Estimators | 12.15 | \$33,051.09 |
| VDC Managers | 14.42 | \$33,702.72 |

The Cost of Bad Data and Miscommunication

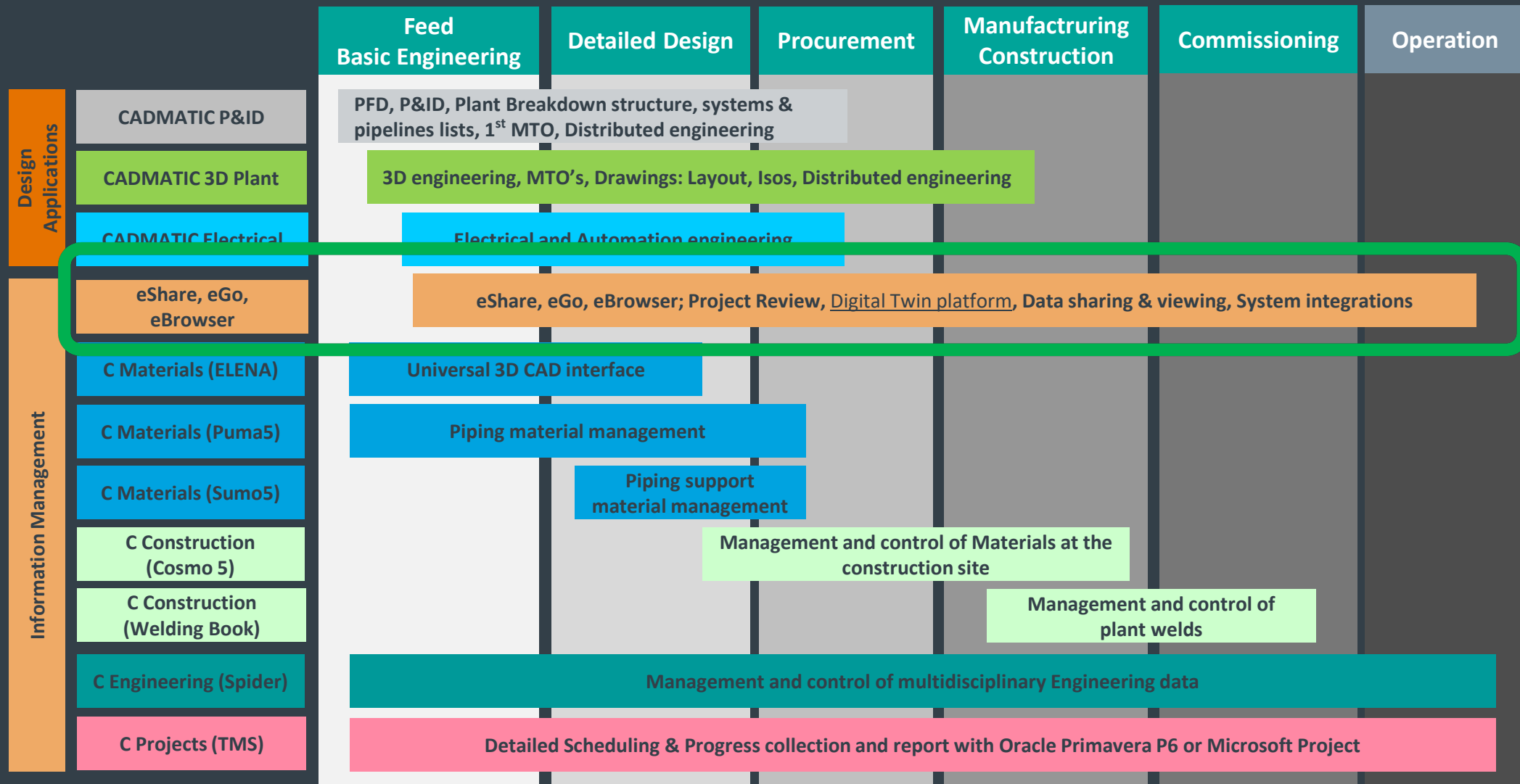


Source(s): PlanGrid/FMI

Our offering



Cadmatic portfolio in Project phases



Cadmatic portfolio in Project phases

Information Management

Feed
Basic Engineering

Detailed Design

Procurement

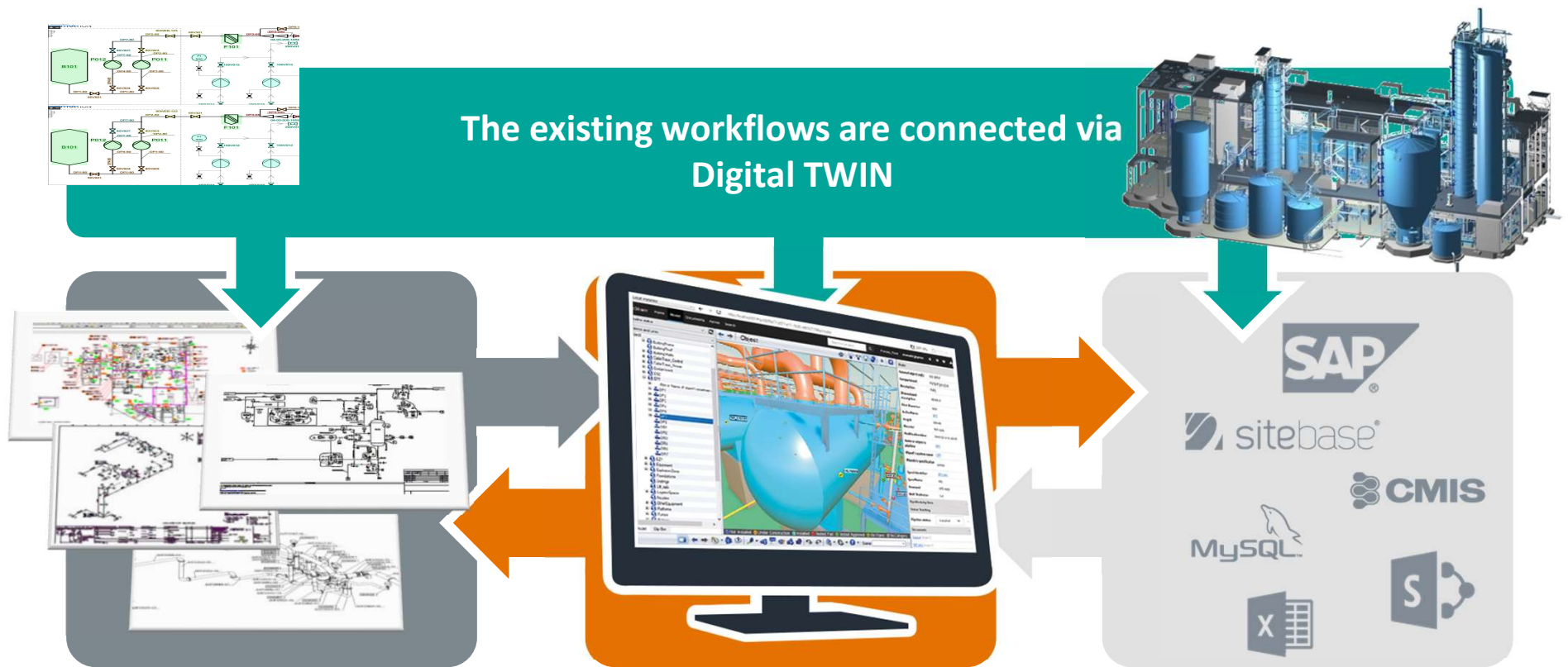
Manufacturing
Construction

Commissioning

Operation

eShare, eGo, eBrowser; Project Review, Digital Twin platform, Data sharing & viewing, System integrations

Digital Twin - User Interface to plant information



eShare connects project/plant information, data and systems connect engineering data



DEMO

 **CADMATIC**

Digital Twin – Some Cadmatic success within Digitalisation



ENI Italy and Repsol Spain: Global oil & gas and energy giants implement eShare for Digital Twins, to visualize data in the construction of production facilities and as part of Plant information management



CADMATIC is a key element in our journey to the next level of digitalization” says MEYER CEO, Jan Meyer.



Co-operation and progress in field of Digital Twins with major Pulp & Paper, TSP, Mining and Process Industry Leaders



Giveaway points

- Avoid the pitfalls of overengineering digital twins — revolutionize how data consumers access and utilize insights
- Include the ownership and quality of data to very first contracts
- Call Vesku and tell him to offer me a bun



The logo for CADMATIC, featuring a stylized 'C' icon with orange and white curved lines to its left, followed by the word 'CADMATIC' in a bold, silver, sans-serif font.

CADMATIC