

The Industrial Metaverse and Sustainable Manufacturing

FIIF Event 11.4.2024

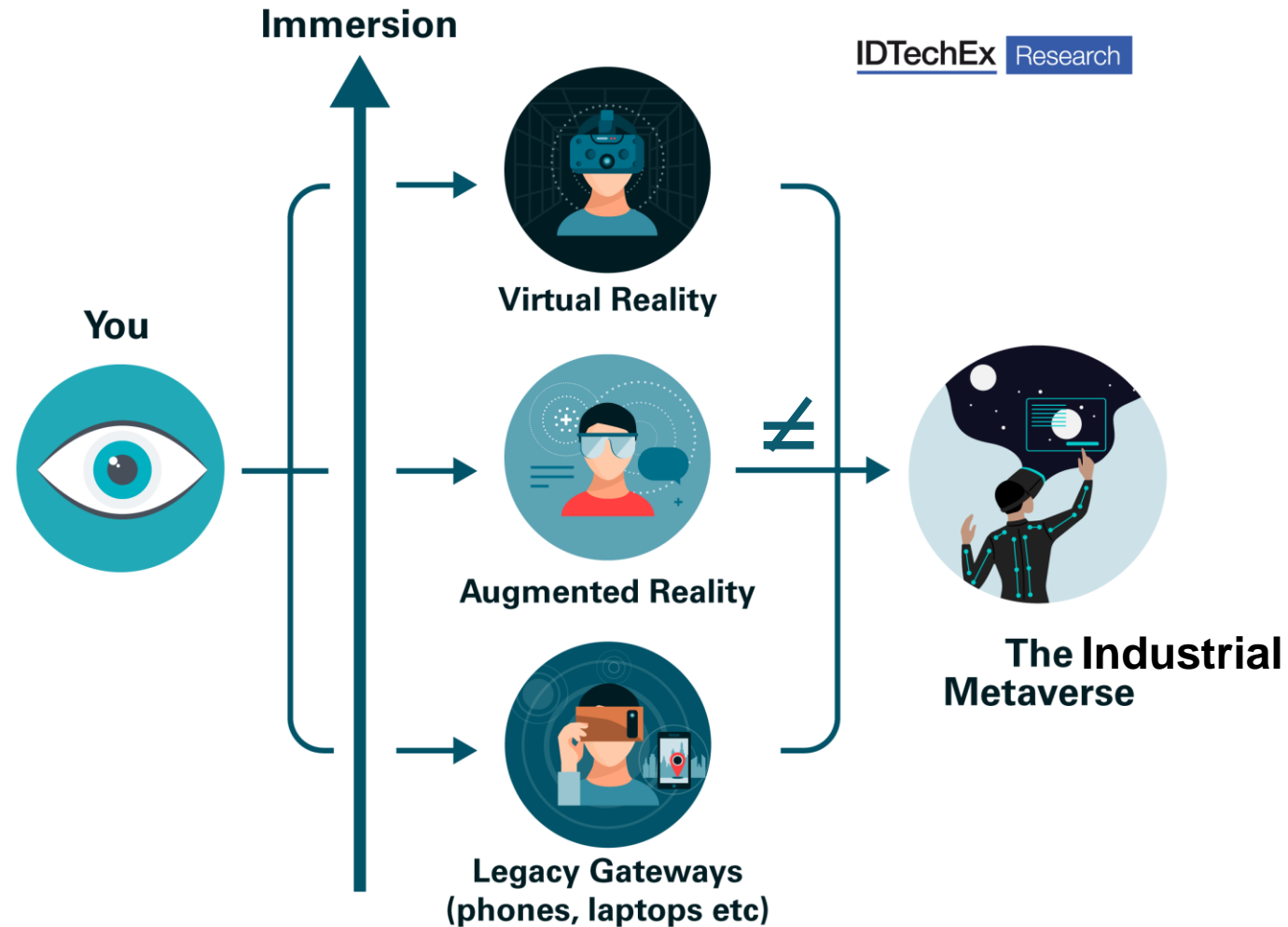
Miikka Pönniö / Siemens Osakeyhtiö



SIEMENS

Industrial Metaverse?

Don't be confused, what is it not



Key features of an Industrial Metaverse

Digital Twins of products and production, looking and behaving like their real-life versions, with accurate physics and materials.

Interoperable platforms built on open standards allowing suppliers to interact and contribute along the entire developer community

Allowing manufacturers to better respond to customer demands, reduce downtime, adapt to supply chain uncertainties and increase sustainability

Real-life synchronized models, making it possible to diagnose singular points in the past and simulate infinite situations

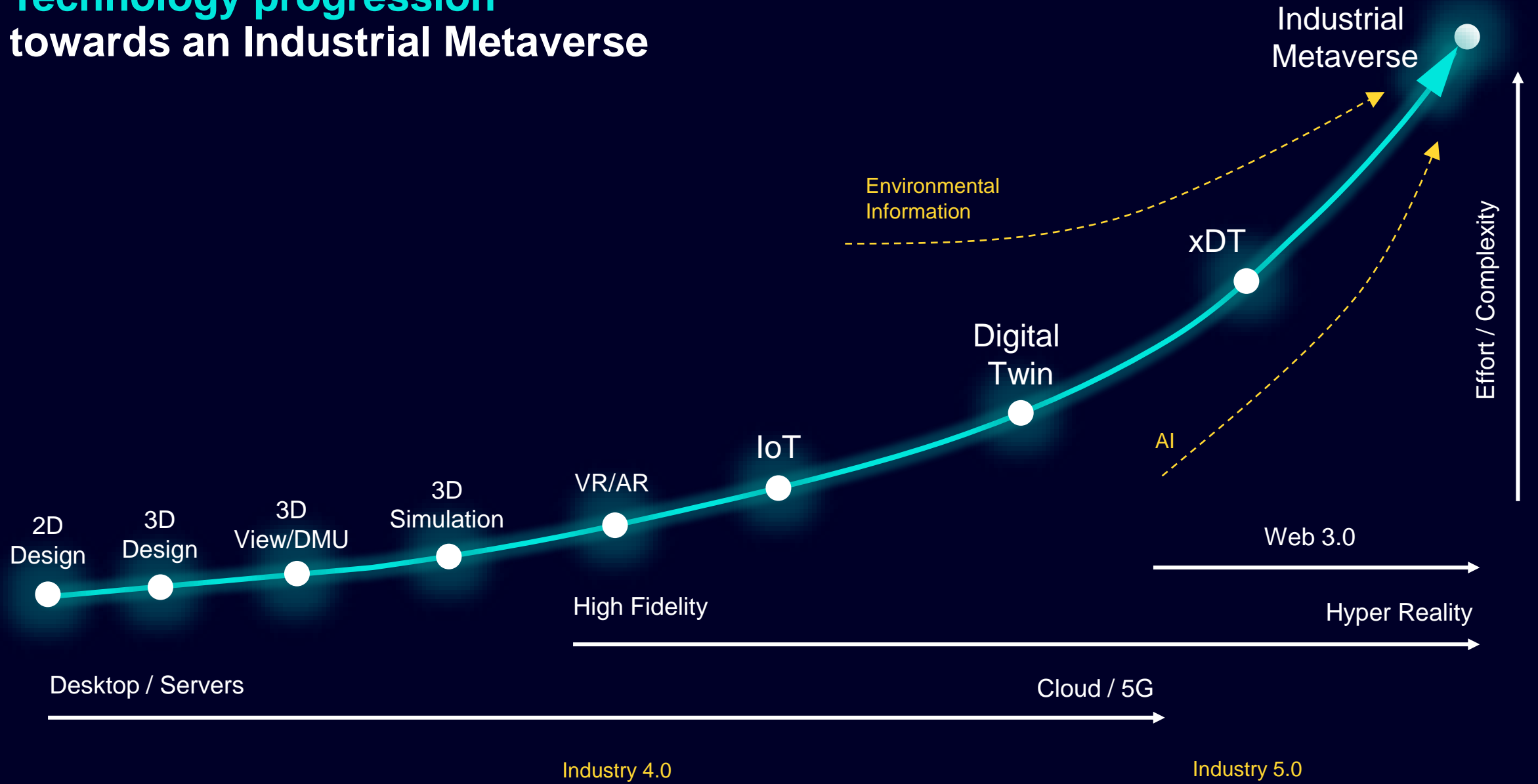
AI-enabled systems constantly optimizing operations and processes by training on the infinite data produced through simulations (+ Edge + 5G)

(How?)

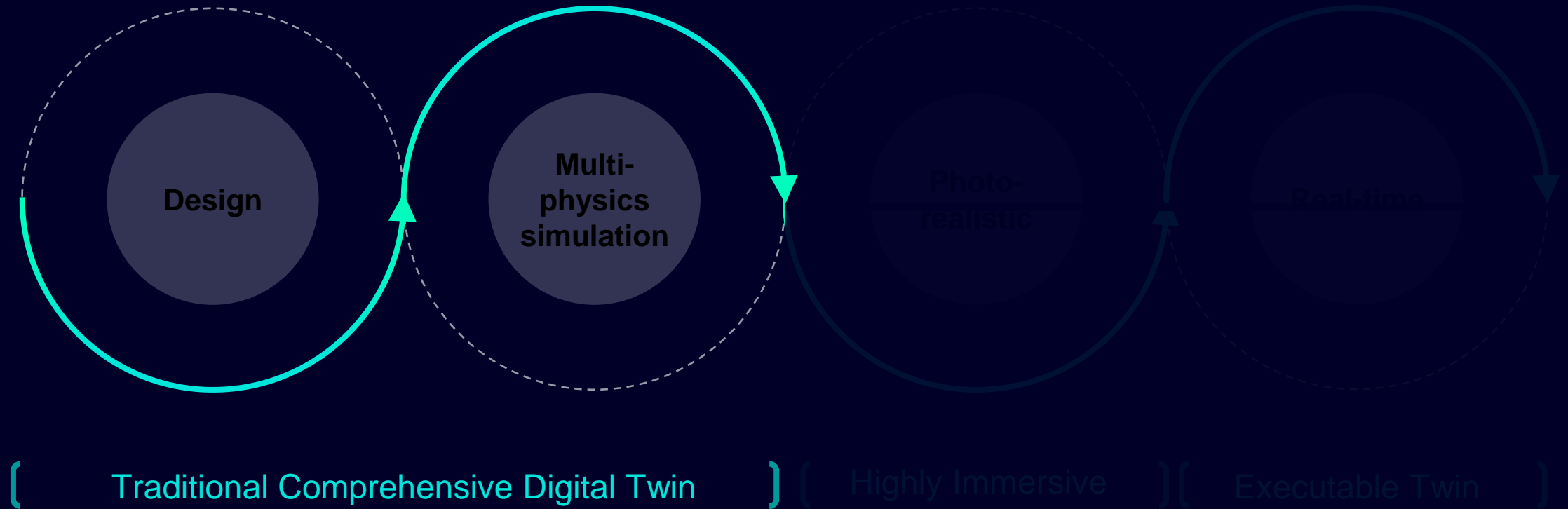
(Why?)

(How?)

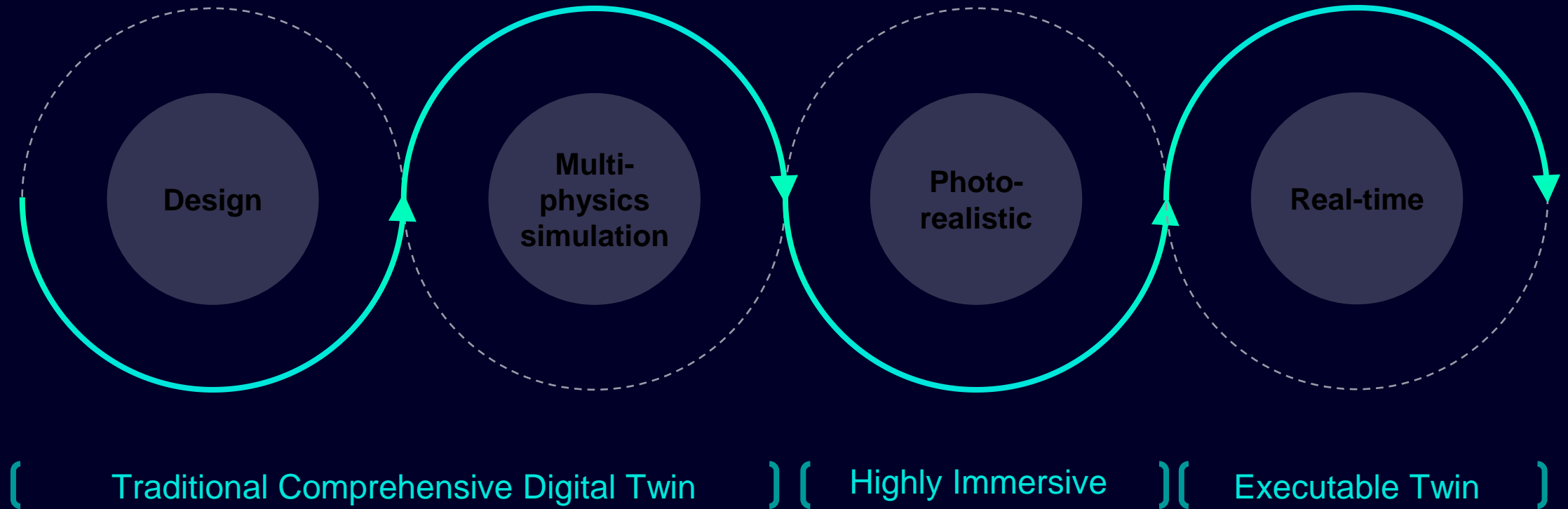
Technology progression towards an Industrial Metaverse



Journey to the metaverse ... step 1 & 2

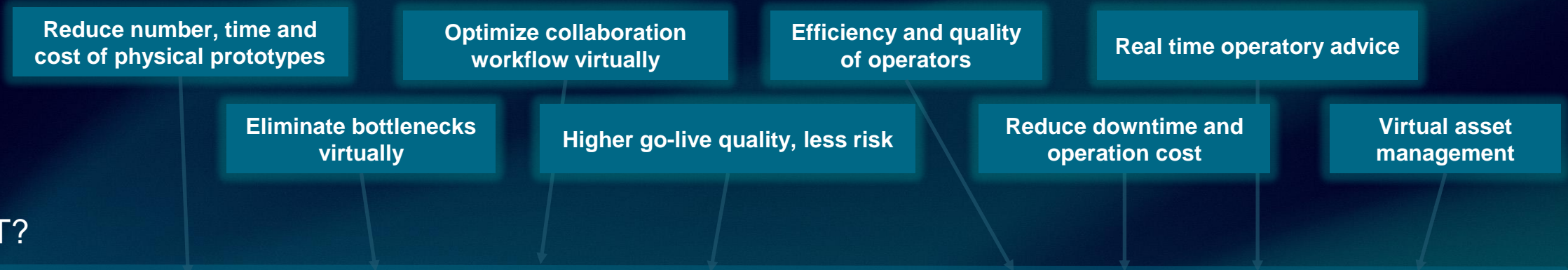


Journey to the metaverse ... step 3 & 4

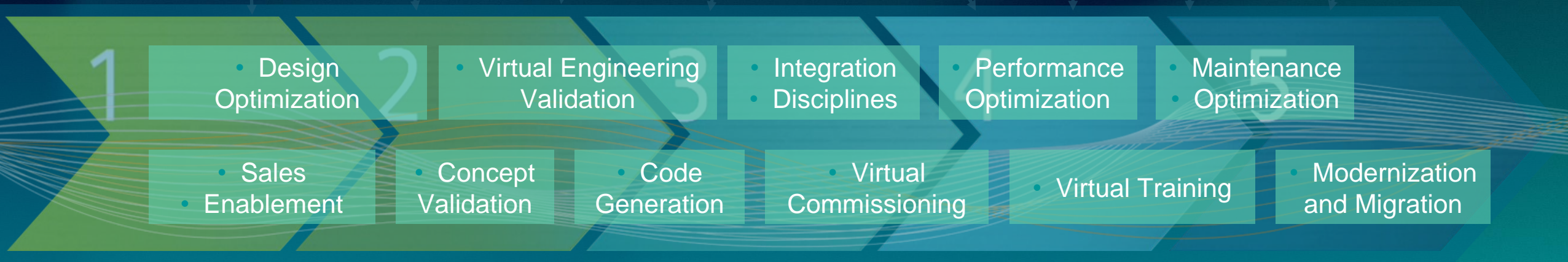


The IMV value across the value chain

WHY?



WHAT?



WHEN?



Link to videos

[The Next Evolution of Industrial Automation - Industrial Metaverse](#)

[Siemens FREYR Industrial Metaverse Showcase](#)

[Immersive Engineering for Design](#)

Industrial Metaverse

**It's the next step in
the digital transformation**