

SOLTEQ

ROBOTICS

FIIF event: ROS

22.9.2022

ROS in Finnish robotics

Solteq Oyj

Solteq is a publicly listed Nordic provider of IT services and software solutions specializing in the digitalization of business and industry-specific software.

Key figures	2022
Professionals	+650
Locations	6
Offices	14
Turnover	69.1 MEUR





Customer Success Stories - with quantified results



S Group is a customer-owned Finnish network of companies in the retail and service sectors, with more than 1,800 outlets in Finland. Founded 1904, revenue 11,71B€ (2019).

Solteq Retail Robot provided successfully

- New source of data for business analytics
- Profound understanding of employee working hours reduction opportunities for inventory tasks
- Precise product location data for online picking process
- Empty shelf data for optimization and customer service development

“We are constantly investing in the development of customer service, utilizing the opportunities created by modern technology. Solteq Plc's Retail Robot independently collects information on products and shelf edge labels. Up-to-date information on empty shelves and incorrect product information plays an important role in improving sales and customer service.”

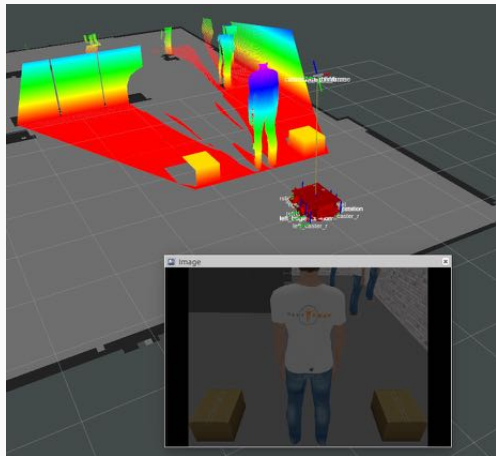
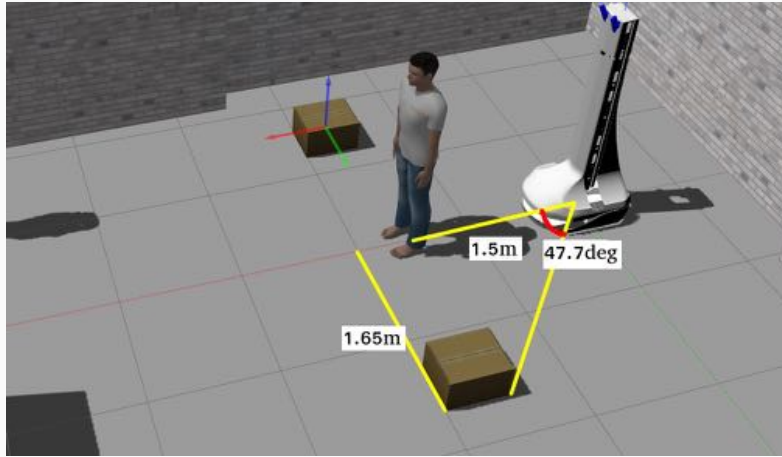
-Sanna Timola SVP,

Supply Chain Management and Store Operations at S-Group

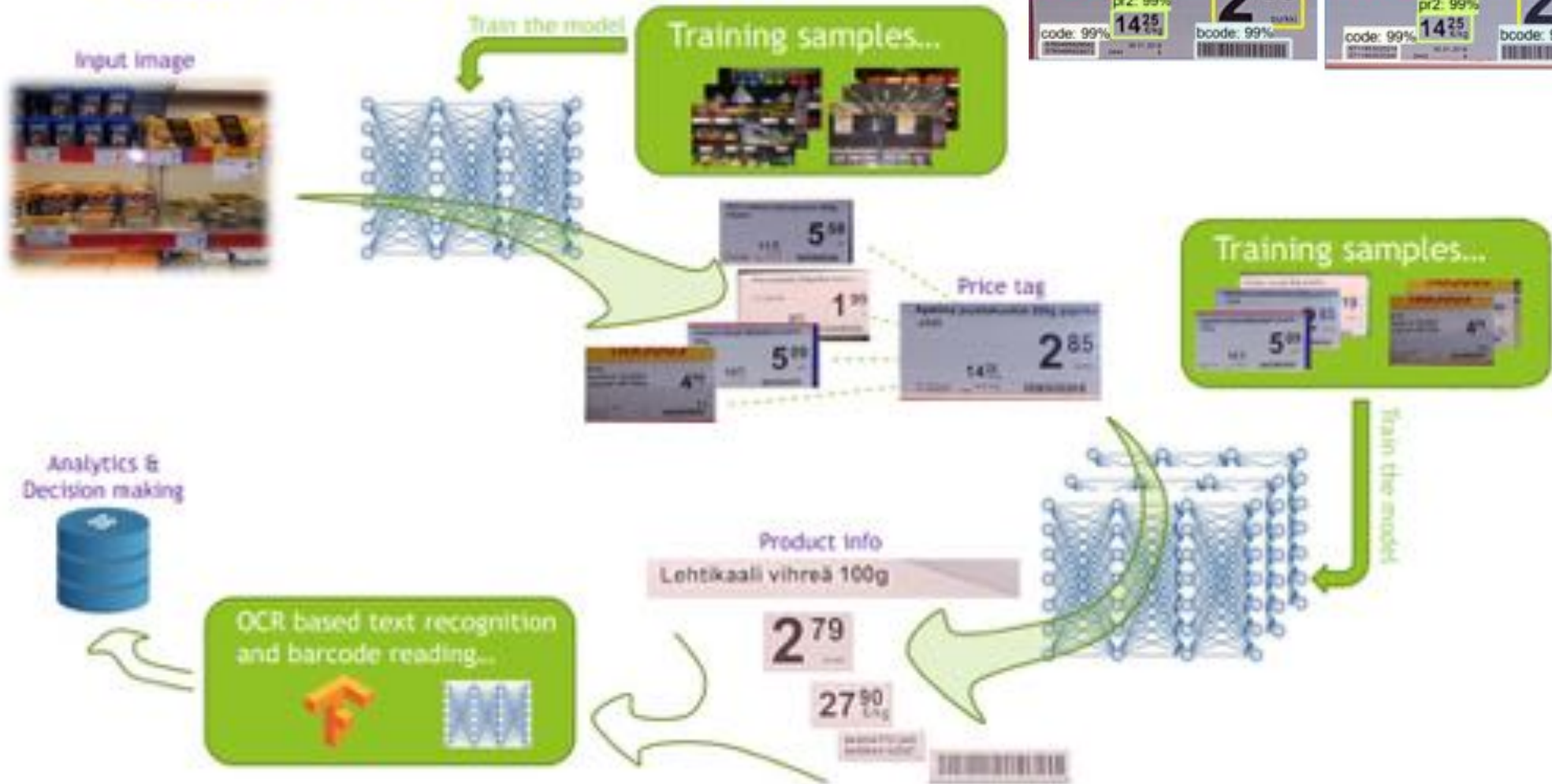


Source: <https://www.sttinfo.fi/tiedote/myymalaa-itsekseen-kiertava-rolle-robotti-kartoittaa-hyllypuutteita?publisherId=68574024&releaseId=69858964>

Obstacle avoidance



Data processing pipeline



Solteq Robotics Product Portfolio

Solteq Retail Robot



Solteq Retail Robot moves autonomously inside a store to recognize empty shelves including incorrect price tags. It also builds a 3D map of each store with exact product locations and can be integrated to the POS, PIM, planogram and ERP systems. Solution is featured in **Gartner's** Market guide for Smart Robots in Retail (24th of June 2021)

Solteq SR-100 & SR-250



Solteq Indoor Logistics Robot moves autonomously carrying loads up to 250 kilograms. The robot can be integrated with other systems, such as elevators, used in the premises. Load-carrying solutions, such as platforms, are tailored to each customer's needs.

Solteq SR-400



Solteq Trolley Robot moves autonomously carrying loads up to 400 kilograms. The robot can be integrated with other systems, such as elevators, used in the premises. Load-carrying solutions, such as platforms, are tailored to each customer's needs.



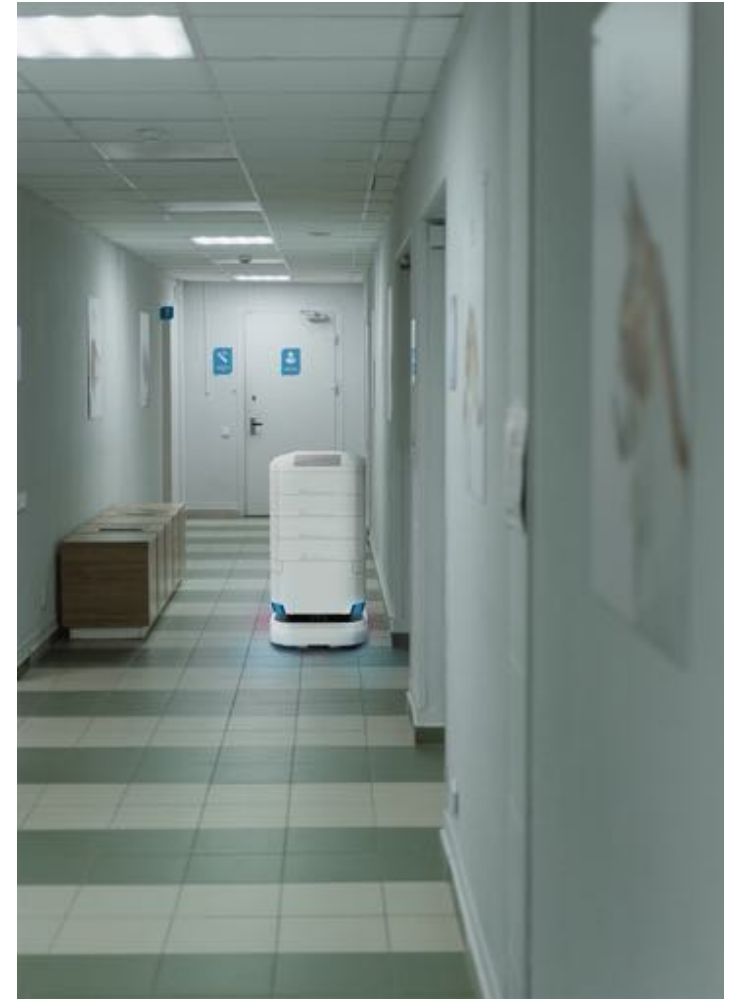
Technology dependencies

Software Stack Dependencies

- Robot Operating System (ROS)
- Google Tensorflow
- Microsoft Azure Cloud



Indoor logistics in hospitals





SOLTEO
ROBOTICS

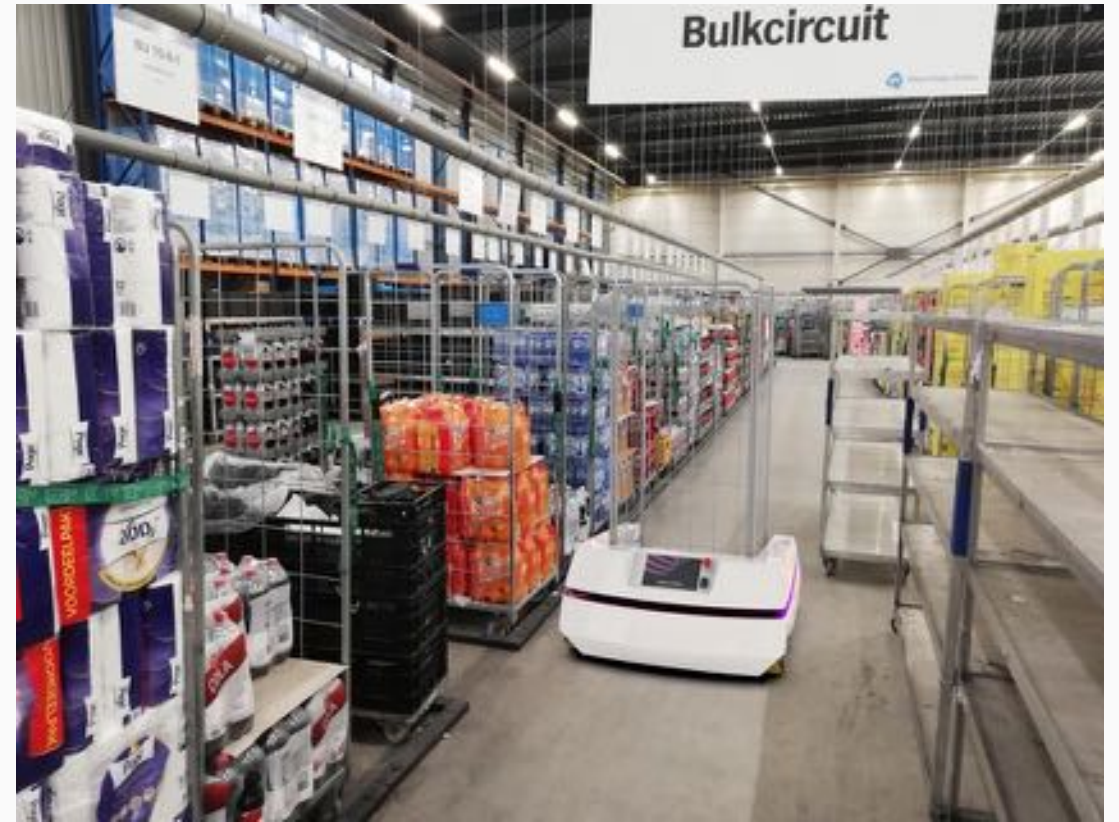
Customer Success Stories



Children hospital medicine delivery pilot (ongoing)

- New hospital building makes testing new processes possible
- Employee retention (+15k steps daily) is an issue that requires modern solution
- Repetitive task that can be automated rather easily
- More business opportunities for Solteq Robotics afterwards
- Joint development done with design thinking
- Kone elevator ecosystem with latest hardware available
- New version under development

Concept images



Thank you

Timo Kupsa

+358 50 386 5314

timo.kupsa@solteq.com

[linked.in/in/timokupsa](https://www.linkedin.com/in/timokupsa)

twitter.com/timokupsa