



NLS
NATIONAL
LAND SURVEY
OF FINLAND

Location Innovation Hub LIH

Creating Location Intelligence for
Europe

Dr. Antti Jakobsson

13
business partners

3
regions

7
reference spaces

200
spatial data services

600
data sets

5
novel sensor data sets

100
SMEs in our network

50 000
potential location data services available through European Data Portal

15
university, public sector, NGO partners

20
associated and other partners

55
countries involved



Built Environment



Bioeconomy



Health & wellbeing



Transportation

€93.4 billion

Estimated value for the European geospatial industry market (by 2020)

59%

of the companies receive their revenue from the public sector

€13 billion

Estimated potential value of economic benefits in increasing use of location intelligence annually in Finland (Study 2019)

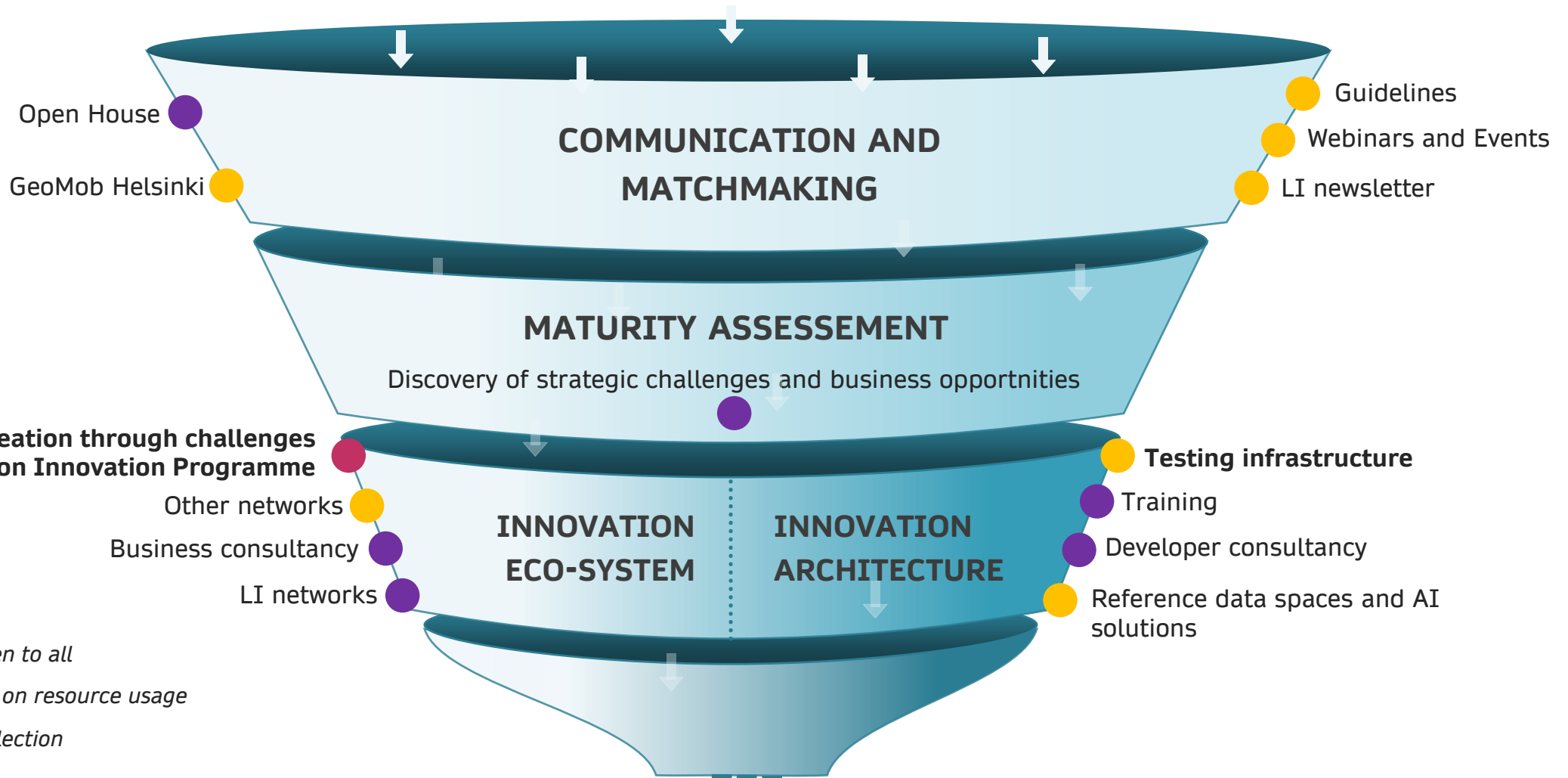
Interoperability of location and other data

Precise positioning

Next generation navigation space

FGI LIH Centre

Regional offices



Open House

GeoMob Helsinki

COMMUNICATION AND MATCHMAKING

Guidelines

Webinars and Events

LI newsletter

MATURITY ASSESSEMENT

Discovery of strategic challenges and business opporntnities

Co-creation through challenges and Location Innovation Programme

Other networks

Business consultancy

LI networks

INNOVATION ECO-SYSTEM

INNOVATION ARCHITECTURE

Testing infrastructure

Training

Developer consultancy

Reference data spaces and AI solutions

● Free and open to all

● Gatekeeping on resource usage

● Calls with selection

Co-creation projects

New solutions in public and industry sectors

New joint offerings by SMEs

Europe

Finland

International organisations

 Health & wellbeing

 Built environment

 Agri+food

LI networks

 Forestry

 Autonomous driving

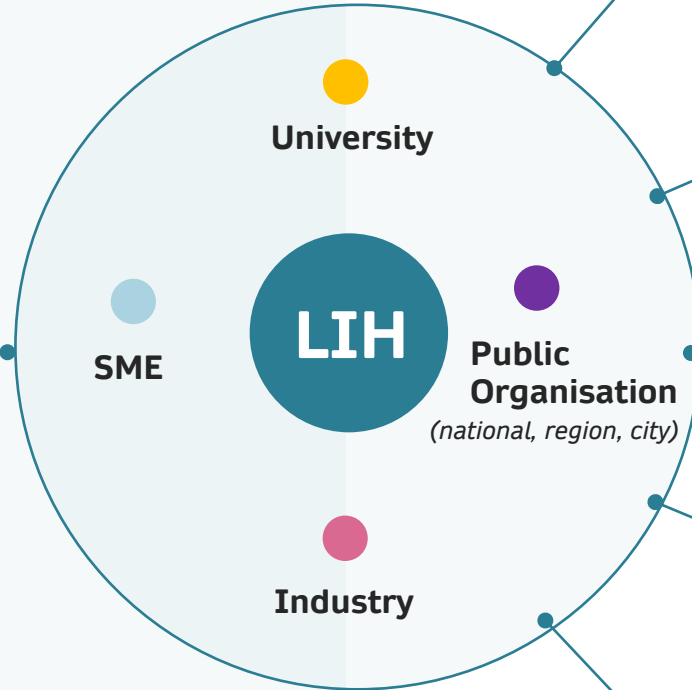
 European Base Data Providers

Funding organisations

European projects

EDIH network

EEN network




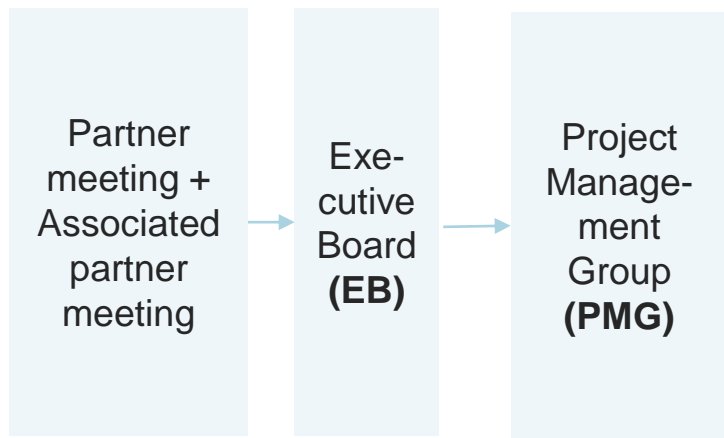
 Industry networks

 Finnish Public Sector network

 National projects

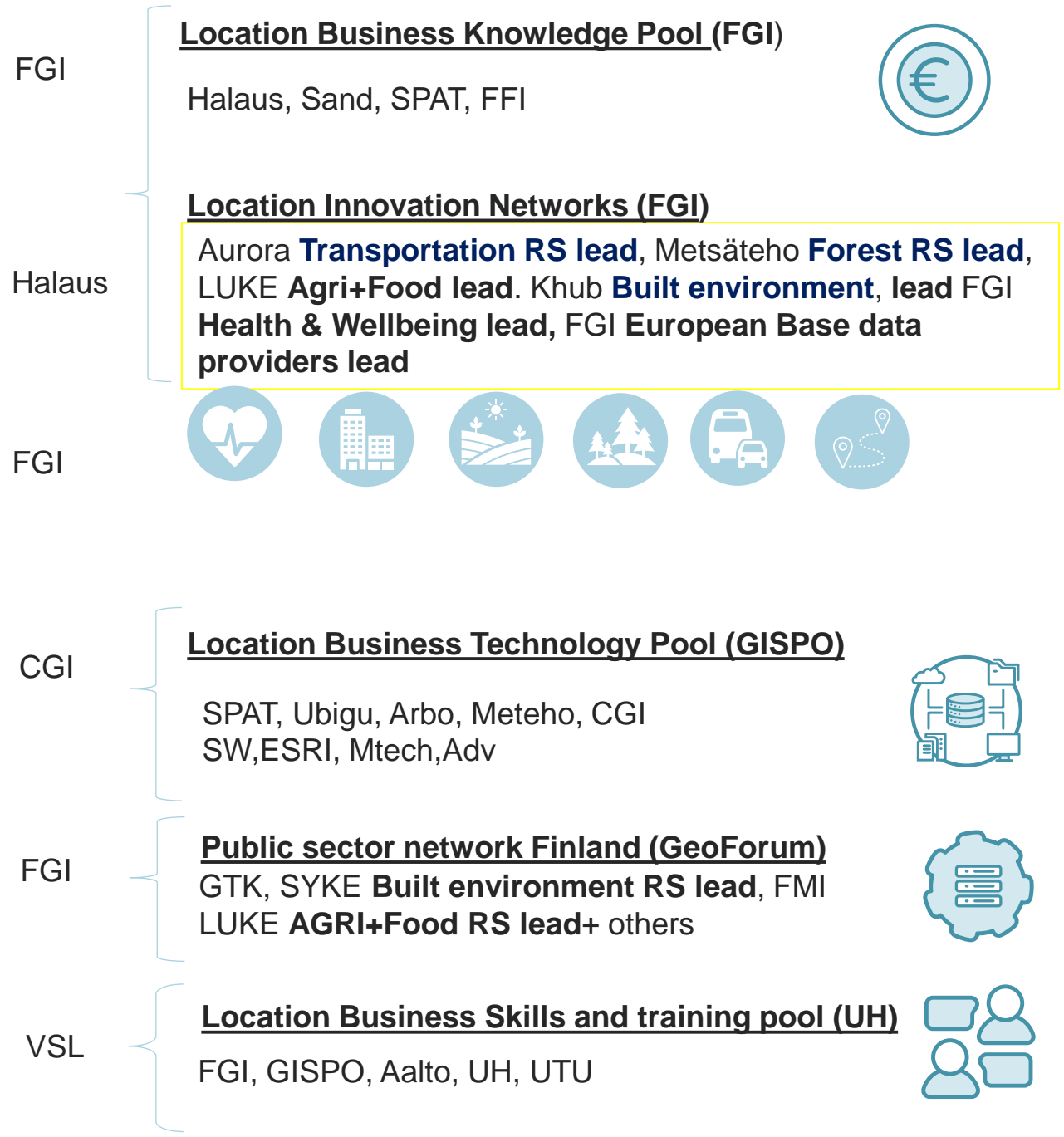
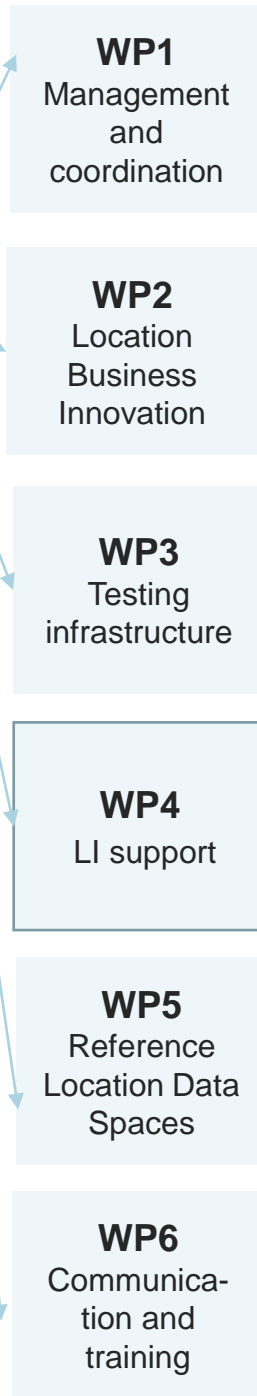
 Finnish EDIH network

 Funding organisations

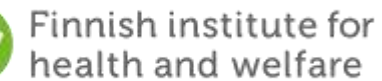


LIH office
 Project manager (FGI)
 Project administrator (FGI)
 Communication manager (FG)
 Network manager (FGI)
 Technical support (FGI)

Regions
 Turku (VSL,UTU)
 Tampere (TCR, Here)
 Oulu (OAMK,OIA)
 Other (FGI, FFI)



Partners and Associated partners



European and National projects supporting LIH-GEOE3

Interoperability based on national sources

Metadata and semantic search

Quality assurance and dashboard

Open OGC APIs

Semantic harmonisation

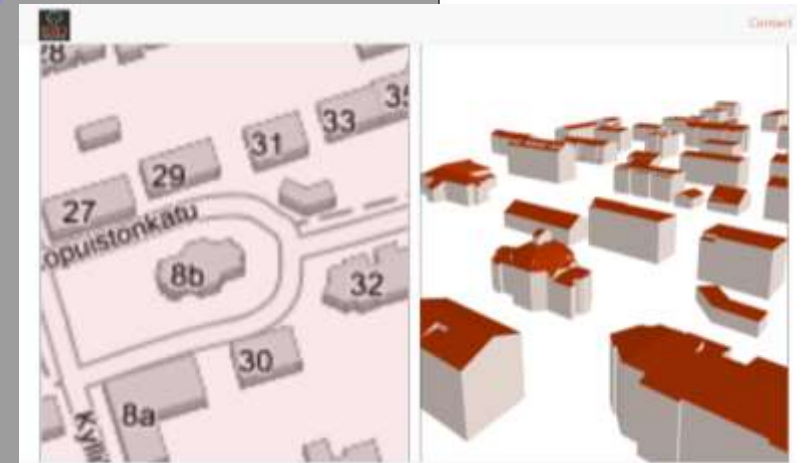
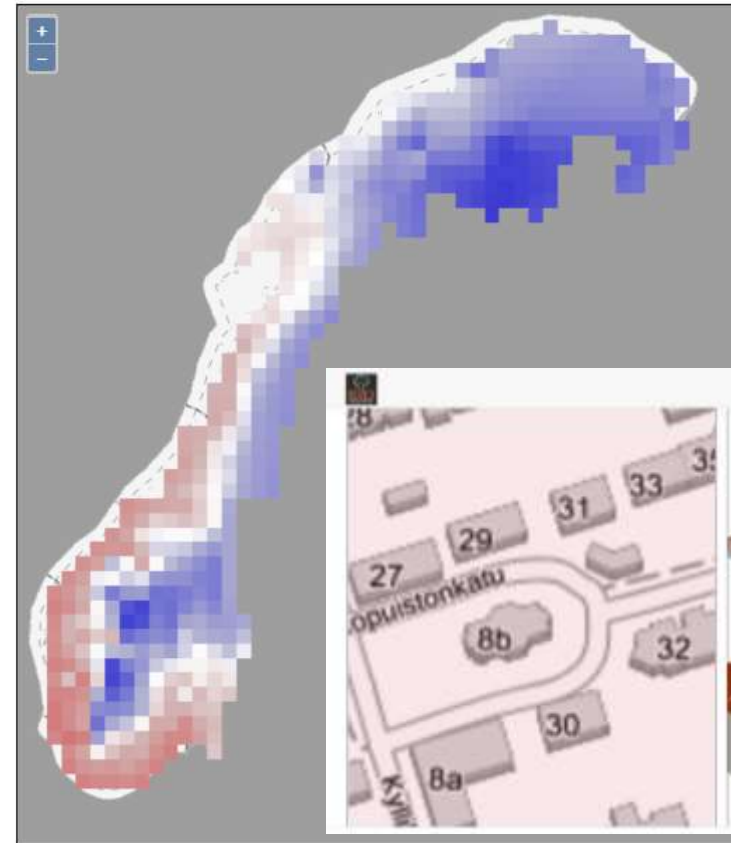
Integration of statistical and meteorological data

3D

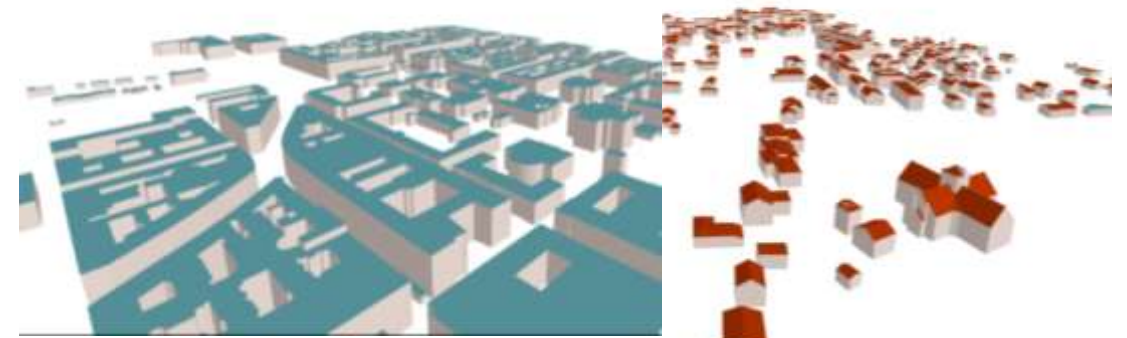
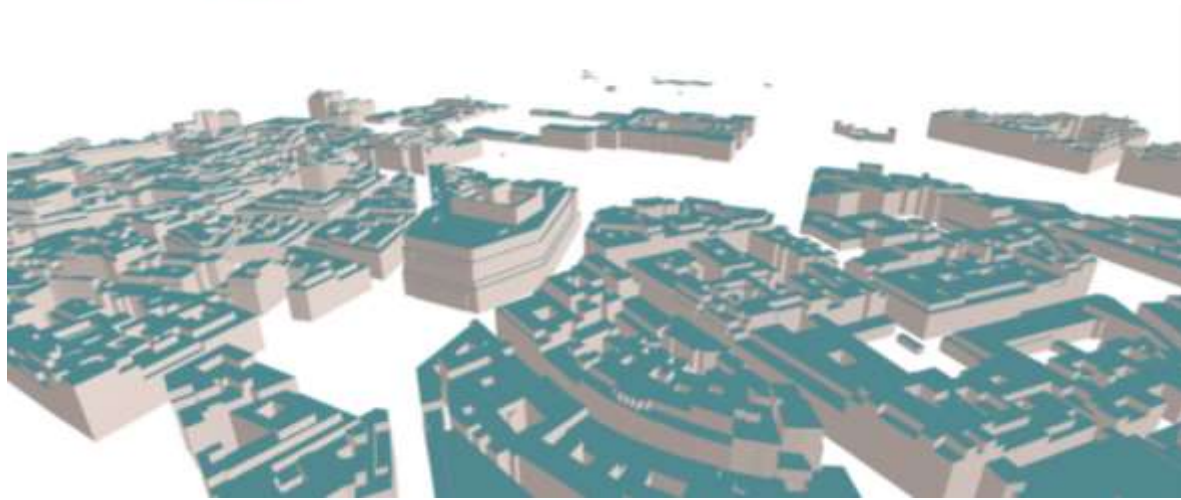
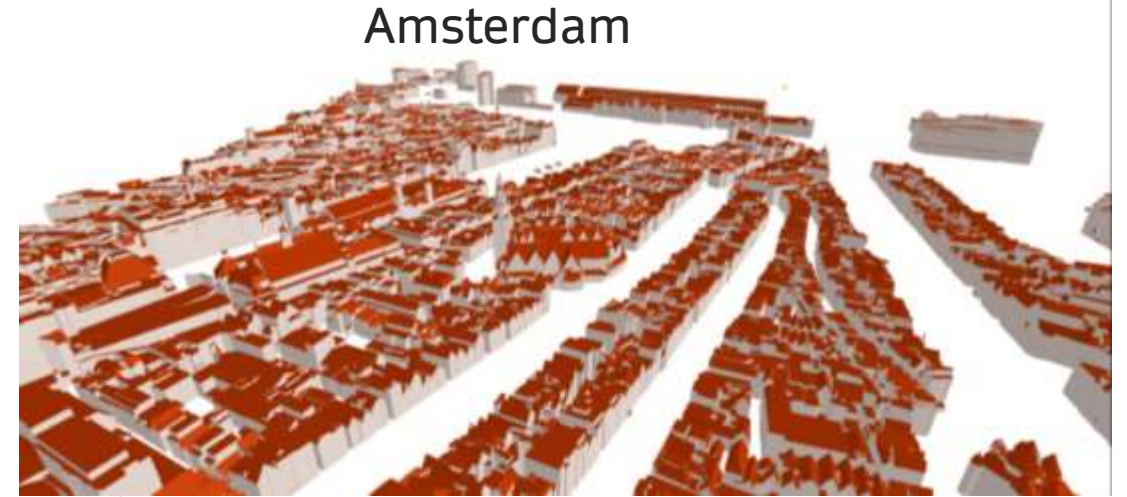
Use cases: Solar Energy, Smart Cities and Electric Cars

Zoom in to explore the coverage.

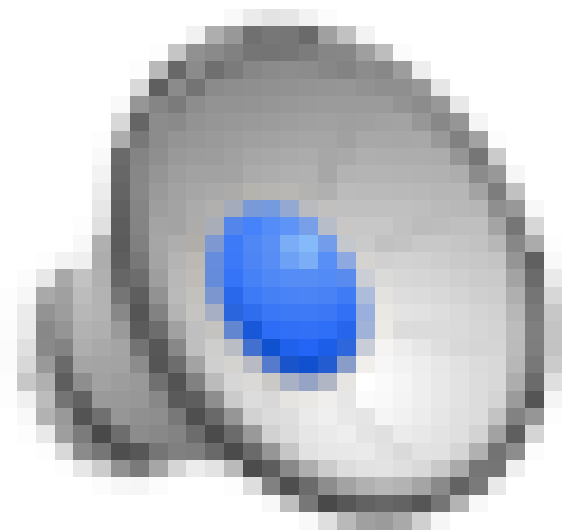
GTiff



Try yourself: geoe3platform.eu APIs are open!



European and National projects supporting LIH- Unite -Forest digitalization



European and National projects supporting LIH- Agriculture Digitalization



Farmer application

- Flight planning
- Data capture flight
- Data transfer to cloud service
- Processed data transfer to farmer

Farmer controls process

- Selection of area of interest
- Scheduling tasks
- Decision making

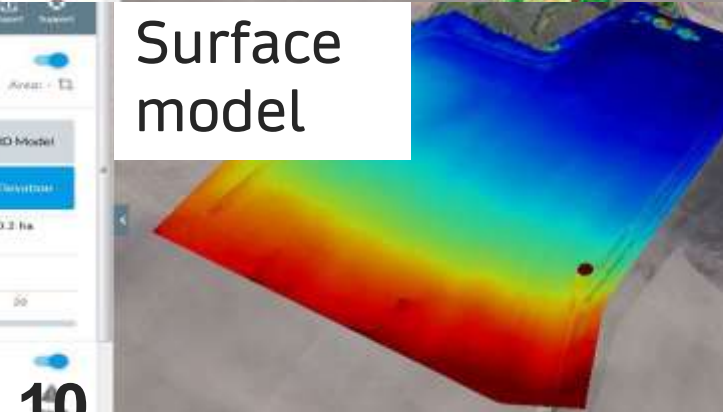
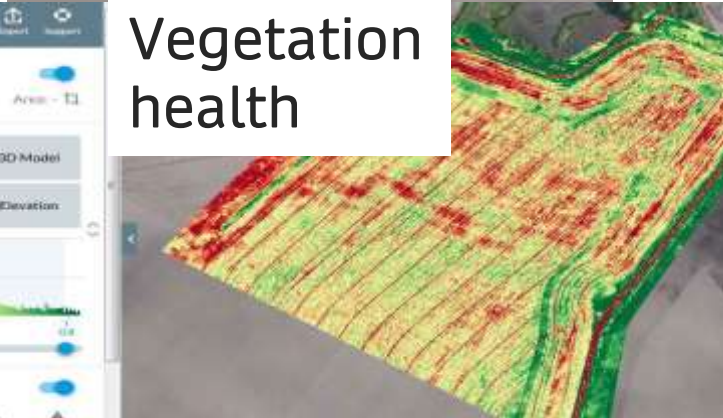
Approximate costs

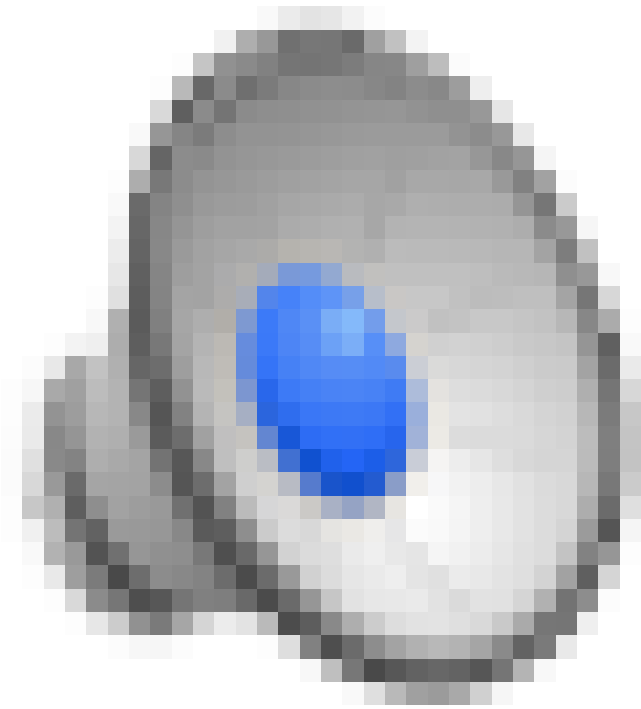
- Drone: 1000 – 2000 €
- Sensor: RGB/CIR: 500 €;
- Service: 100 €/month
- Speed <1 day



Cloud service

- Image data processing, analysis, classification





Thank you



Contact: Antti Jakobsson, National Land Survey of Finland, antti.jakobsson@nls.fi, phone +358 50 599 4123