

# WIRELESS CONDITION MONITORING IN **MASSIVE** SCALE

JARI TOIVANEN, CHIEF ENGINEER

**TREON** GATEWAY

**TREON** INDUSTRIAL NODE

**TREON** INDUSTRIAL NODE

**TREON** INDUSTRIAL NODE

**TREON**

PREDICT FAILURE  
REDUCE COST  
CONNECTED PLANTS

## Predictive Maintenance Benefits

- Reduced lost production time
- Longer machine lifetime/lower effective cost
- Faster and more efficient repair
- Increased safety

TREON

## Disrupt Off-line data collection

### Enablers

- Wireless
- Commodity components
- From DCS to IT
- No Realtime need

COST-EFFICIENT  
EASY TO DEPLOY  
SCALABLE  
ANY CLOUD

TREON GATEWAY

TREON INDUSTRIAL NODE

TREON INDUSTRIAL NODE

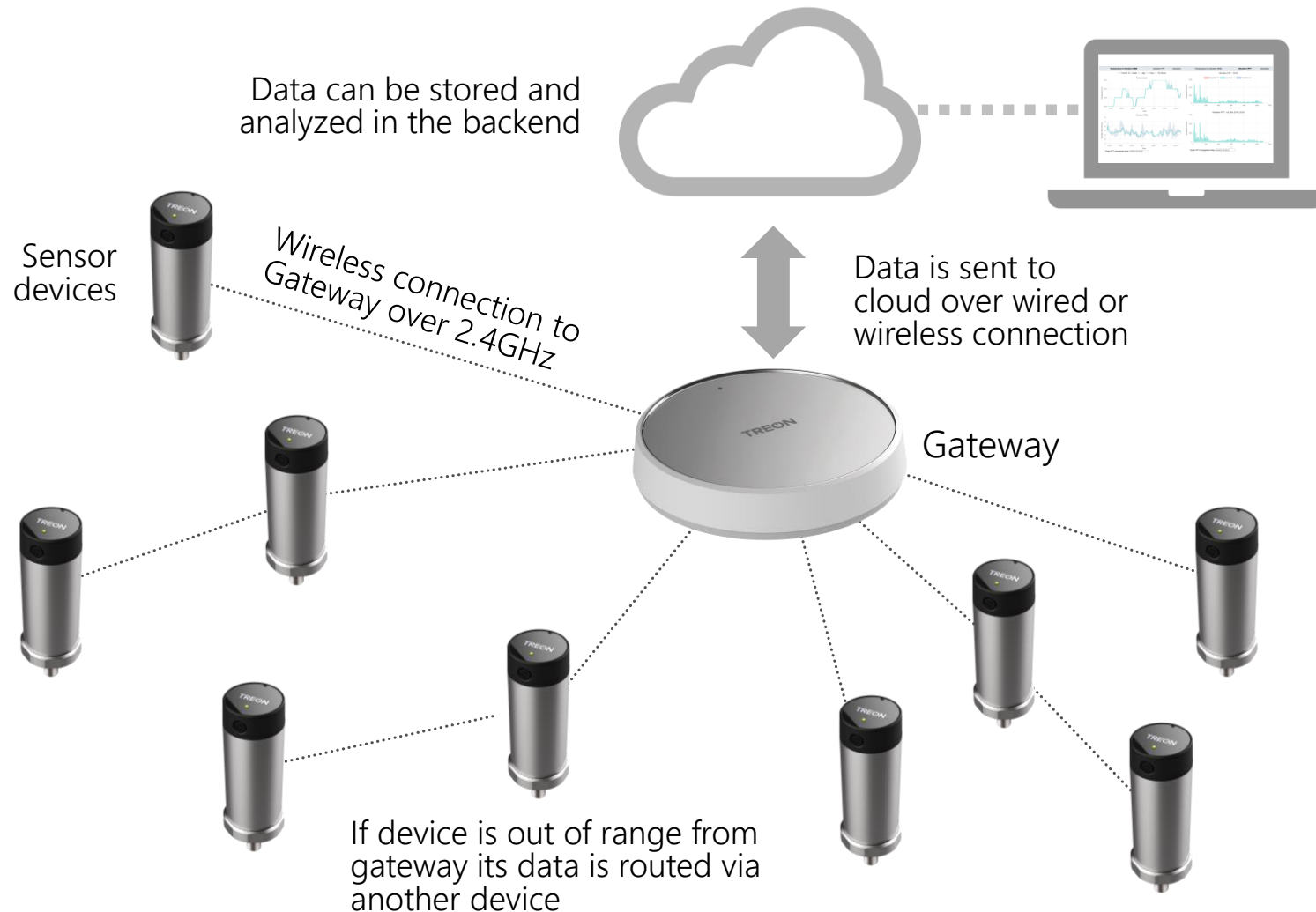
TREON INDUSTRIAL NODE

TREON  
INDUSTRIAL  
NODE

TREON



# BUILT FOR WIRELESS MESH NETWORK



Data, analysis and recommendation are viewed from a cloud connected device

Remote management commands can be sent to devices via Gateway

When there is a need to gather data from high volume and density of sensors, a mesh network is the perfect solution for connectivity. Treon devices comes with preloaded support for Wirepas Mesh.

with  WIREPAS

# DESIGNING INDUSTRIAL NODE



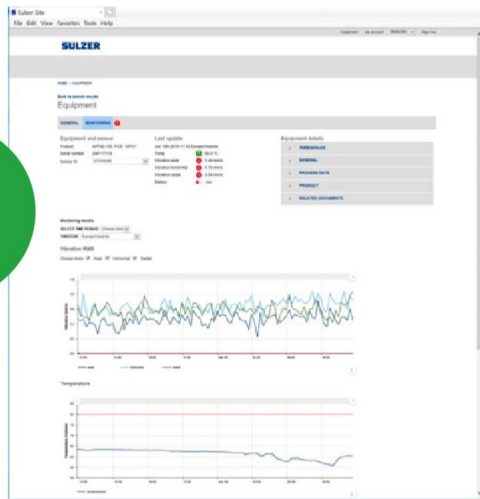
- ▶ Learning by doing
- ▶ Vibration measurement is not like temperature measurement
- ▶ Electronics potting is a challenge
- ▶ Getting E2E working is always a challenge
  - ▶ Treon to get data to cloud
  - ▶ Partners doing analysis & UI

# REFERENCE: SULZER SENSE

August 28<sup>th</sup>, 2019

Sulzer takes its expertise in pumping solutions to the next level by introducing the Sulzer Sense wireless IoT condition monitoring system. Sulzer's long experience in demanding industrial processes ensures that the Sulzer Sense monitoring device is built for real-life needs and conditions, to the benefit of our customers.

Cloud service



On Sulzer www-page 

LET'S GET STARTED

[sales@treon.fi](mailto:sales@treon.fi)

**TREON**  
[www.treon.fi](http://www.treon.fi)