



THE DATA PROCESSING PLATFORM FOR EDGE

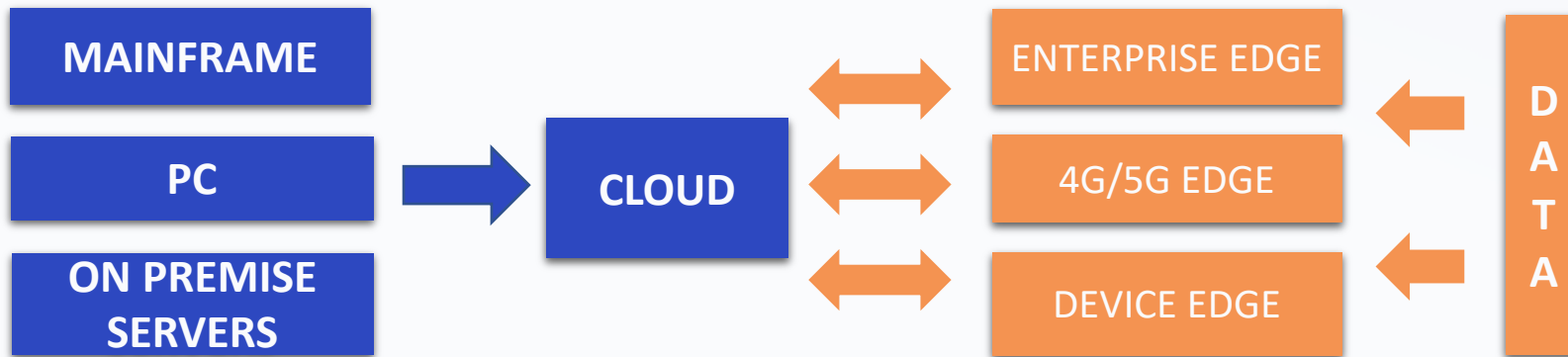
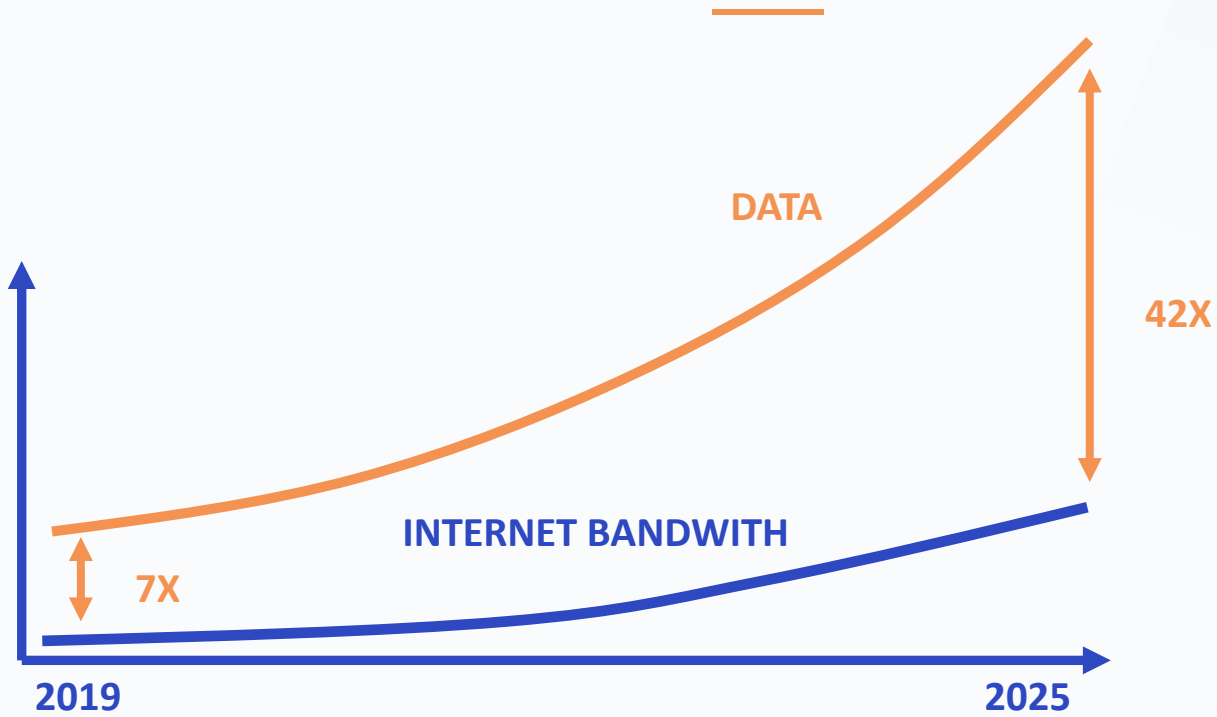
We make immediate data consumption a reality

Henri Kivioja /CEO
henri@lempeaedge.com
+358 40 865 9516
rain-edge.com

”Our mission is
to provide Data Consumability
for Every Industry”

Edge Computing

2025: 175 Zettabytes of Data in the world
42x Gap Between Data Amount and available Internet bandwidth.
 Obvious opportunity for global Edge Data processing!



- SDN and Ultra-Fast Networking
- Autonomous Vehicles
- Wearables
- Mobile Devices
- Audio and Voice
- Streaming Video
- Pictures
- XR
- IIoT
- Drones
- 5G
- Mobile Gaming



Data are created everywhere



Non-Structured
Data

Companies have a tough reality with current solutions as they:

- **Miss opportunities** when they are not able to get all out of generated data
- **Respond too late** because of centralized processing and storage
- **Pay a lot of money** to cloud vendors and consultants to retrieve data and analytics
- Try to cope with the **enormous amount of waste data** generates



Semi-Structured
Data



Structured
Data

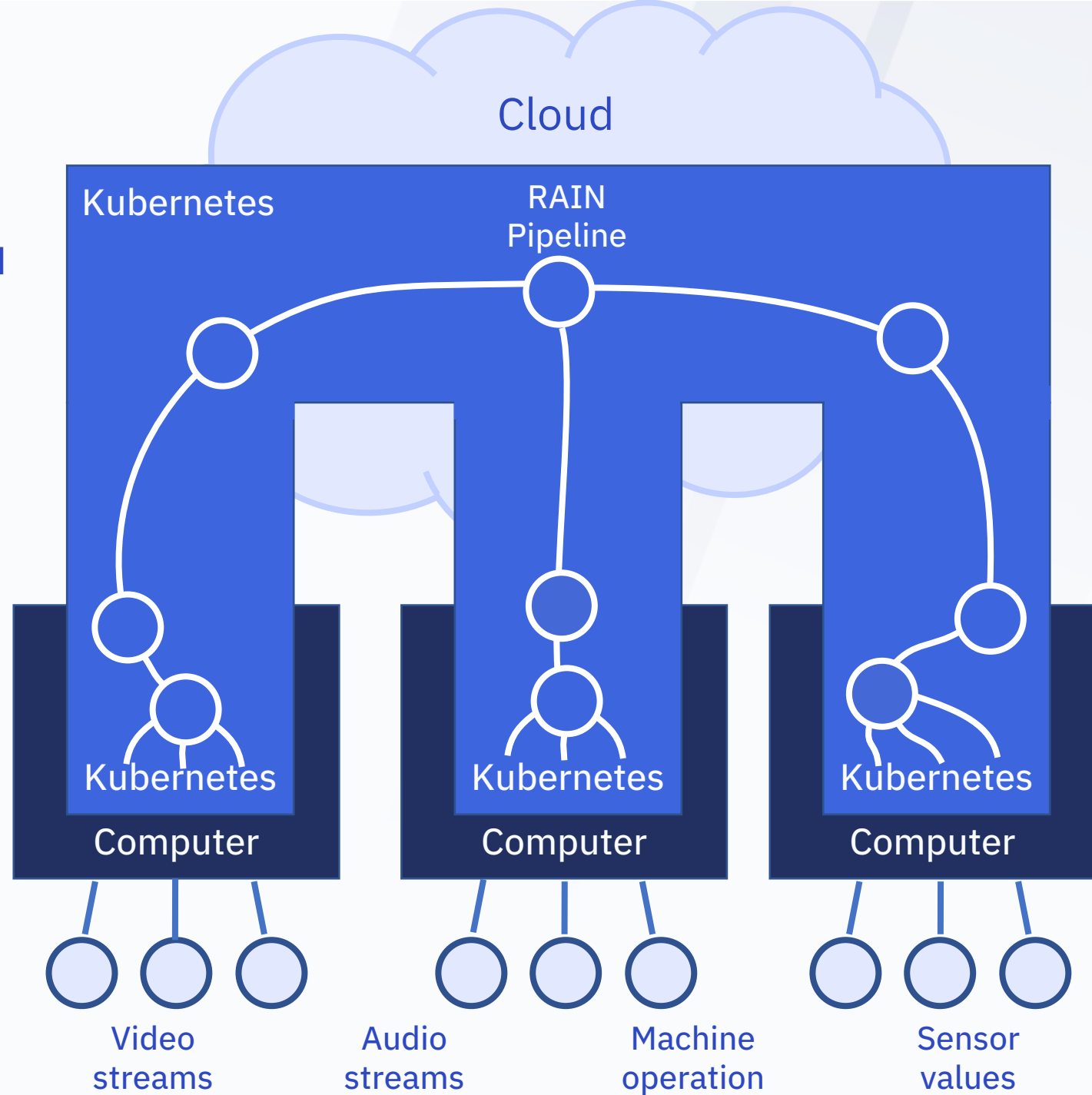


Infra

Data Pipelines
@Edge & Cloud

Computing
@Edge

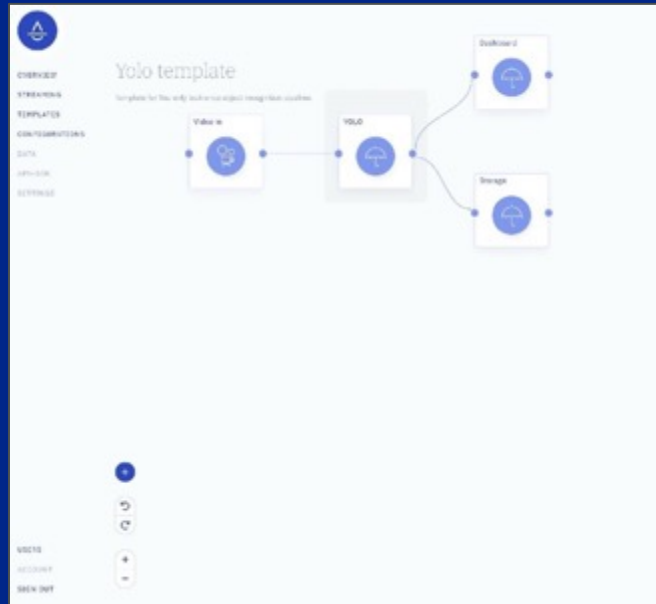
Data
@Edge



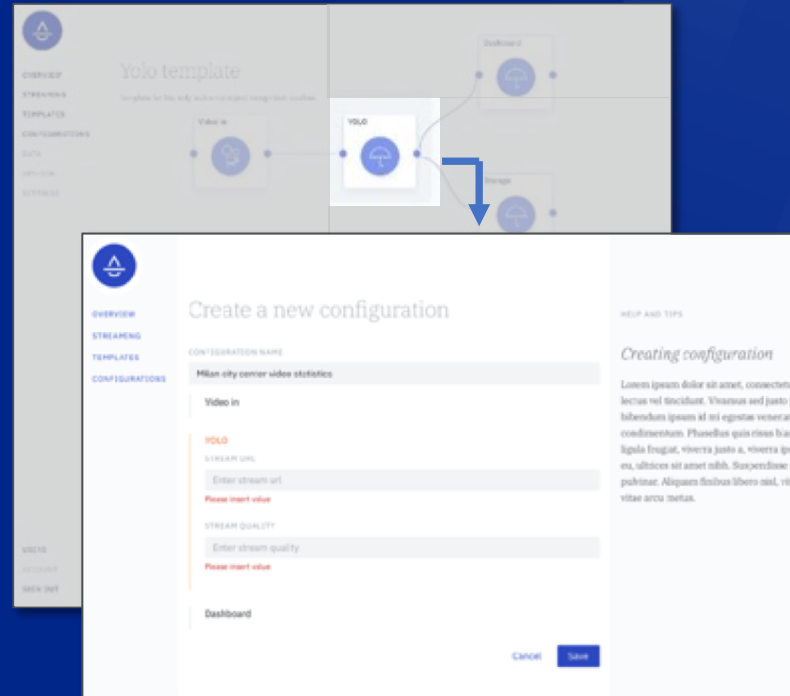
The Product



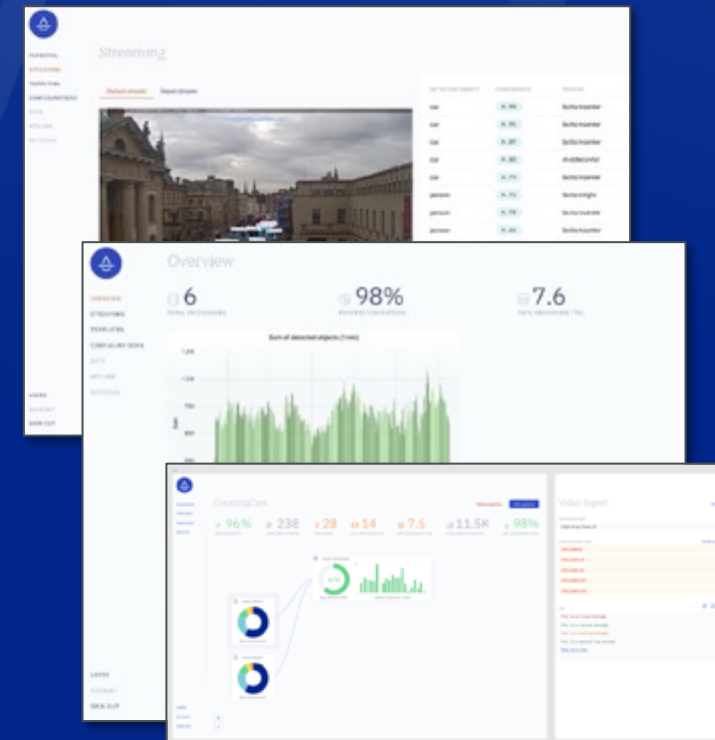
1. Map & plan the dataflow



2. Connect Sources & Distribute

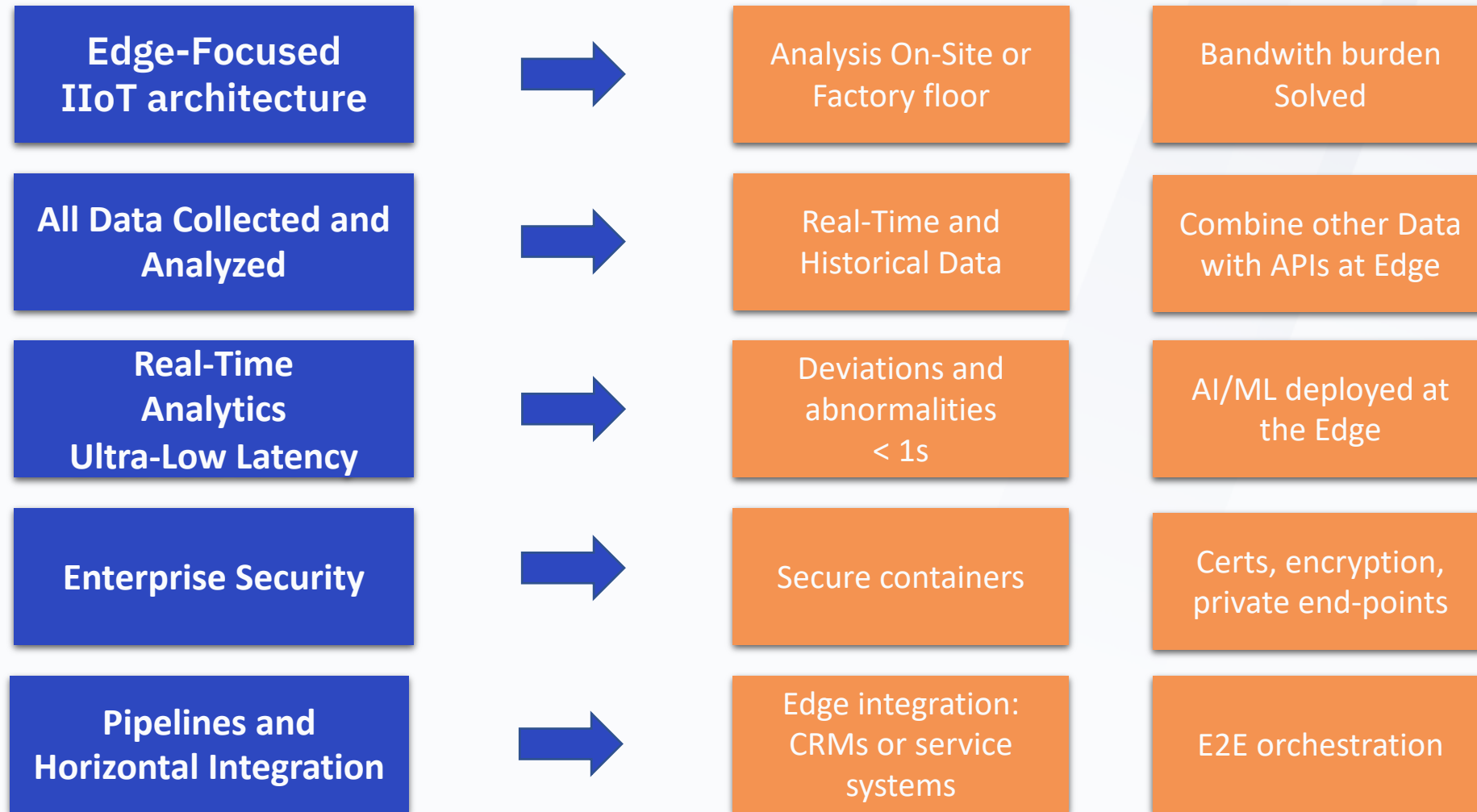


3. Act on real time data

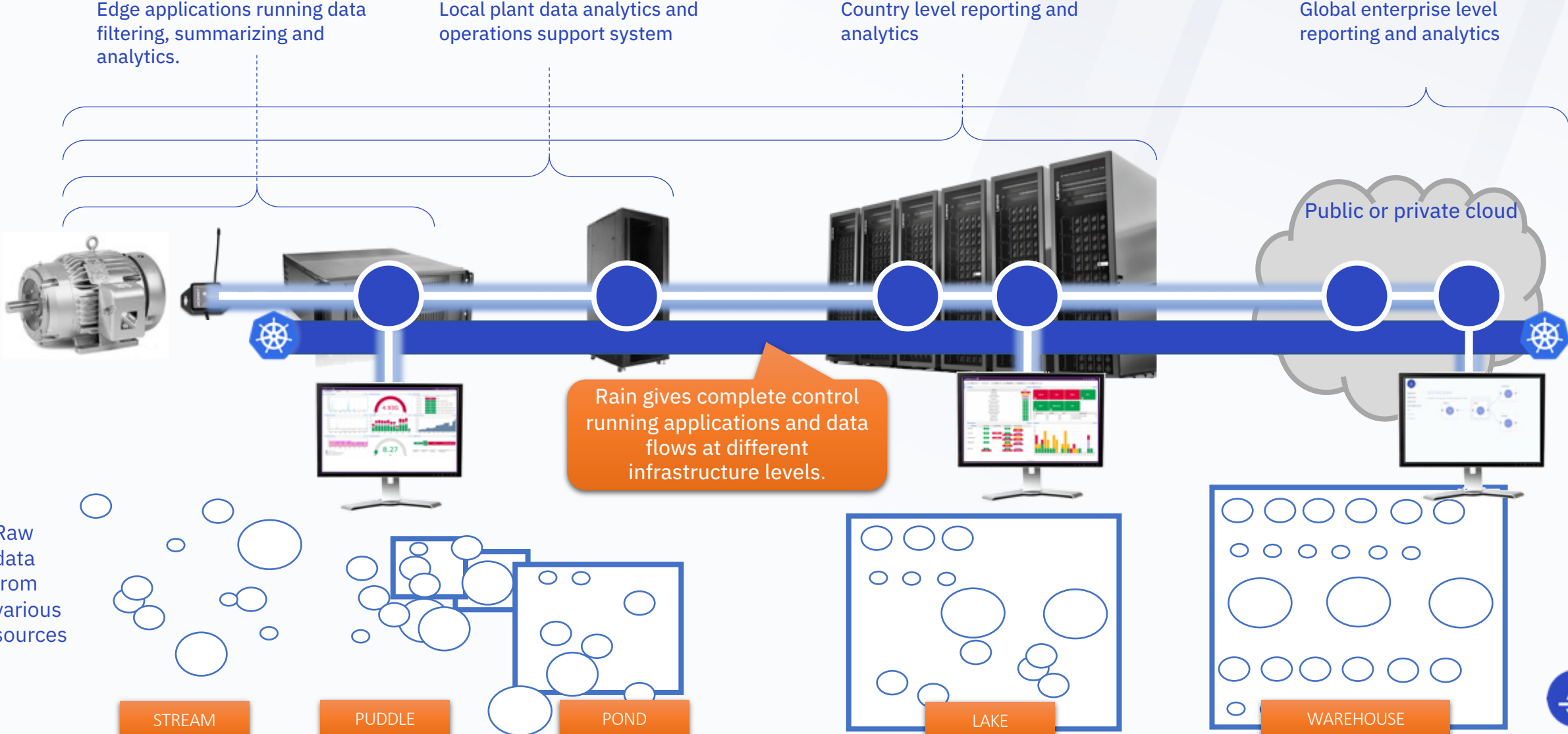


Easy creation of data pipelines and distribution
Process all relevant data with Machine Learning
Quality data available immediately

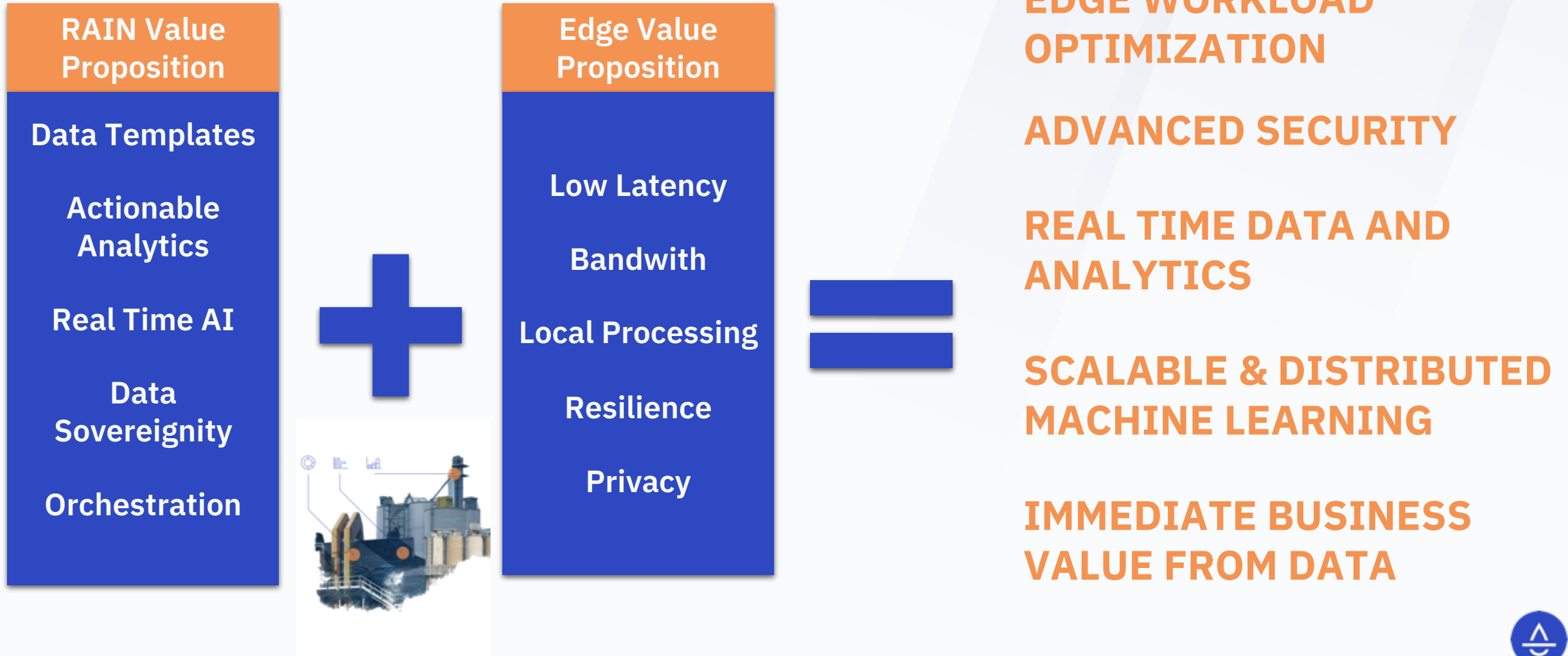
Predictive Maintenance with Edge Computing and Data Processing



Edge and Cloud Computing Topology



Our Value Proposition





THE DATA PROCESSING PLATFORM FOR EDGE

We make immediate data consumption a reality

Henri Kivioja /CEO
henri@lempeaedge.com
+358 40 865 9516
rain-edge.com